

bs-11434R

[Primary Antibody]

MCT 8 Rabbit pAb

BioSS
ANTIBODIES

www.bioss.com.cn

sales@bioss.com.cn

techsupport@bioss.com.cn

400-901-9800

— DATASHEET —

Host: Rabbit

Isotype: IgG

Applications: WB (1:500-2000)

ELISA (1:5000-10000)

Clonality: Polyclonal

Target: MCT 8

Reactivity: Human, Mouse, Rat
(predicted: Rabbit)

Purification: affinity purified by Protein A

Concentration: 1mg/ml

Storage: 0.01M TBS (pH7.4) with 1% BSA, 0.02% Proclin300 and 50% Glycerol.

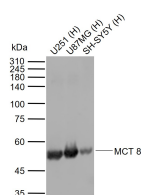
Shipped at 4°C. Store at -20°C for one year. Avoid repeated freeze/thaw cycles.

Predicted MW.: 59 kDa

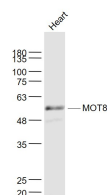
Background: Very active and specific thyroid hormone transporter. Stimulates cellular uptake of thyroxine (T4), triiodothyronine (T3), reverse triiodothyronine (rT3) and diiodothyronine. Does not transport Leu, Phe, Trp or Tyr.

Subcellular Location: Cell membrane

— VALIDATION IMAGES —



Sample: Lane 1: Human U251 cell lysates Lane 2: Human U87MG cell lysates Lane 3: Human SH-SY5Y cell lysates Primary: Anti-MCT 8 (bs-11434R) at 1/1000 dilution Secondary: IRDye800CW Goat Anti-Rabbit IgG at 1/20000 dilution Predicted band size: 59 kDa Observed band size: 50 kDa



Sample: Heart (Mouse) Lysate at 40 ug Primary: Anti- MOT8 (bs-11434R) at 1/1000 dilution Secondary: IRDye800CW Goat Anti-Rabbit IgG at 1/20000 dilution Predicted band size: 59 kD Observed band size: 59 kD