

**bs-20499R****[ Primary Antibody ]****EGFR Rabbit pAb****Bioss**  
ANTIBODIES

www.bioss.com.cn

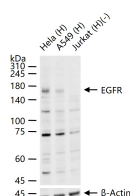
sales@bioss.com.cn

techsupport@bioss.com.cn

400-901-9800

**— DATASHEET —**

<b>Host:</b> Rabbit	<b>Isotype:</b> IgG	<b>Applications:</b> WB (1:500-2000)
<b>Clonality:</b> Polyclonal		<b>Reactivity:</b> Human
<b>GeneID:</b> 1956	<b>SWISS:</b> P00533	
<b>Target:</b> EGFR		
<b>Immunogen:</b> KLH conjugated synthetic peptide derived from human EGFR: 951-1050/1210.		<b>Predicted MW.:</b> 170 kDa
<b>Purification:</b> affinity purified by Protein A		<b>Subcellular Location:</b> Secreted ,Cell membrane
<b>Concentration:</b> 1mg/ml		<b>Location:</b> ,Cytoplasm ,Nucleus
<b>Storage:</b> 0.01M TBS (pH7.4) with 1% BSA, 0.02% Proclin300 and 50% Glycerol. Shipped at 4°C. Store at -20°C for one year. Avoid repeated freeze/thaw cycles.		
<b>Background:</b> The protein encoded by this gene is a transmembrane glycoprotein that is a member of the protein kinase superfamily. This protein is a receptor for members of the epidermal growth factor family. EGFR is a cell surface protein that binds to epidermal growth factor. Binding of the protein to a ligand induces receptor dimerization and tyrosine autophosphorylation and leads to cell proliferation. Mutations in this gene are associated with lung cancer. Multiple alternatively spliced transcript variants that encode different protein isoforms have been found for this gene. [provided by RefSeq, Jul 2010]		

**— VALIDATION IMAGES —**

25 ug total protein per lane of various lysates (see on figure) probed with EGFR polyclonal antibody, unconjugated (bs-20499R) at 1:1000 dilution and 4°C overnight incubation. Followed by conjugated secondary antibody incubation at r.t. for 60 min.