

**bsm-10695M****[ Primary Antibody ]****EGFR Mouse mAb****Bioss**  
**ANTIBODIES**

www.bioss.com.cn

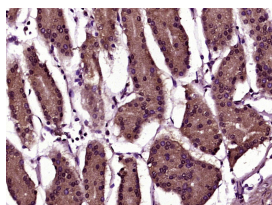
sales@bioss.com.cn

techsupport@bioss.com.cn

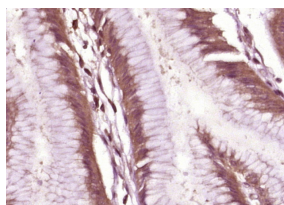
400-901-9800

**— DATASHEET —**

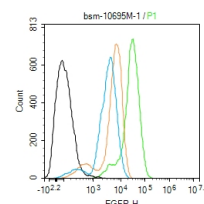
<b>Host:</b> Mouse	<b>Isotype:</b> IgG1	<b>Applications:</b> IHC-P (1:100-500) <b>IHC-F</b> (1:100-500) <b>IF</b> (1:100-500) <b>Flow-Cyt</b> (1ug/Test)
<b>Clonality:</b> Monoclonal	<b>CloneNo.:</b> 2B8	
<b>GeneID:</b> 1956	<b>SWISS:</b> P00533	
<b>Target:</b> EGFR		
<b>Immunogen:</b> KLH conjugated synthetic peptide derived from human EGFR Isoform 2: 178-304/1210.		
<b>Purification:</b> affinity purified by Protein G		<b>Reactivity:</b> Human
<b>Concentration:</b> 1mg/ml		<b>Predicted MW.:</b> 42/130 kDa
<b>Storage:</b> Size : 50ul/100ul/200ul 0.01M TBS (pH7.4) with 1% BSA, 0.02% Proclin300 and 50% Glycerol. Size : 200ug (PBS only) 0.01M PBS Shipped at 4°C. Store at -20°C for one year. Avoid repeated freeze/thaw cycles.		
<b>Background:</b> The protein encoded by this gene is a transmembrane glycoprotein that is a member of the protein kinase superfamily. This protein is a receptor for members of the epidermal growth factor family. EGFR is a cell surface protein that binds to epidermal growth factor. Binding of the protein to a ligand induces receptor dimerization and tyrosine autophosphorylation and leads to cell proliferation. Mutations in this gene are associated with lung cancer. Multiple alternatively spliced transcript variants that encode different protein isoforms have been found for this gene. [provided by RefSeq, Jul 2010]		<b>Subcellular Location:</b> Secreted ,Cell membrane ,Cytoplasm ,Nucleus

**— VALIDATION IMAGES —**

Paraformaldehyde-fixed, paraffin embedded (Human stomach); Antigen retrieval by boiling in sodium citrate buffer (pH6.0) for 15min; Block endogenous peroxidase by 3% hydrogen peroxide for 20 minutes; Blocking buffer (normal goat serum) at 37°C for 30min; Antibody incubation with (EGFR) Polyclonal Antibody, Unconjugated (bsm-10695M) at 1:400 overnight at 4°C, followed by operating according to SP Kit(Rabbit) (sp-0023) instructions and DAB staining.



Paraformaldehyde-fixed, paraffin embedded (human gastric carcinoma); Antigen retrieval by boiling in sodium citrate buffer (pH6.0) for 15min; Block endogenous peroxidase by 3% hydrogen peroxide for 20 minutes; Blocking buffer (normal goat serum) at 37°C for 30min; Antibody incubation with (EGFR) Monoclonal Antibody, Unconjugated (bsm-10695M) at 1:400 overnight at 4°C, followed by operating according to SP Kit(Mouse)(sp-0024) instructions and DAB staining.



Blank control:A431. Primary Antibody (green line): Mouse Anti-EGFR antibody (bsm-10695M) Dilution: 1ug/Test; Secondary Antibody : Goat anti-mouse IgG-FITC Dilution: 0.5ug/Test. Protocol The cells were fixed with 4% PFA (10min at room temperature) and then permeabilized with 90% ice-cold methanol for 20 min at -20°C. The cells were then incubated in 5%BSA to block non-specific protein-protein interactions for 30 min at room temperature .Cells stained with Primary Antibody for 30 min at room temperature. The secondary antibody used for 40 min at room temperature. Acquisition of 20,000 events was performed.

**— SELECTED CITATIONS —**

- **[IF=4.5]** Wubin Guo. et al. FERMT1 promotes epithelial-mesenchymal transition of hepatocellular carcinoma by activating EGFR/AKT/ $\beta$ -catenin and EGFR/ERK pathways. TRANSL ONCOL. 2024 Dec;50:102144 IF ;Human. 39353234

Important Note: This product as supplied is intended for research use only, not for use in human, therapeutic or diagnostic applications.