

---

## CD3D Recombinant Rabbit mAb

Catalog Number: bsm-52744R

Target Protein: CD3D

Concentration: 1mg/ml

Form: Liquid

Host: Rabbit

Clonality: Recombinant

Clone No.: 5C1

Isotype: IgG

Applications: WB (1:500-2000), IHC-P (1:100-500), IHC-F (1:100-500), IF (1:100-500), Flow-Cyt (1:50-100), ICC/IF (1:50-200), IP (1:20-50)

Reactivity: Human

Predicted MW: 19 kDa

Entrez Gene: 915

Swiss Prot: P04234

Purification: affinity purified by Protein A

Storage: 0.01M TBS (pH7.4) with 1% BSA, 0.02% Proclin300 and 50% Glycerol.

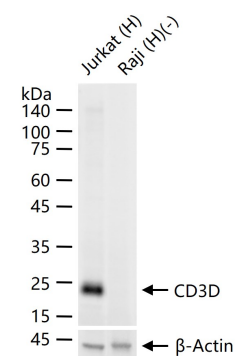
Shipped at 4°C. Store at -20°C for one year. Avoid repeated freeze/thaw cycles.

**Background:** CD3D (CD3d Molecule) is a Protein Coding gene. Diseases associated with CD3D include Immunodeficiency 19 and T-B+ Severe Combined Immunodeficiency Due To Cd3delta/Cd3epsilon/Cd3zeta. Among its related pathways are ICos-ICosL Pathway in T-Helper Cell and CTLA4 Signaling. GO annotations related to this gene include protein heterodimerization activity and transmembrane signaling receptor activity. An important paralog of this gene is CD3G.

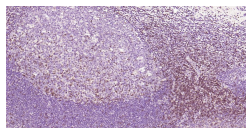
### VALIDATION IMAGES

---

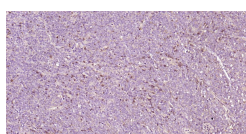




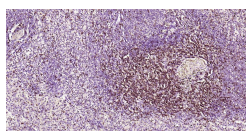
25 ug total protein per lane of various lysates (see on figure) probed with CD3D monoclonal antibody, unconjugated (bsm-52744R) at 1:2000 dilution and 4°C overnight incubation. Followed by conjugated secondary antibody incubation at r.t. for 60 min.



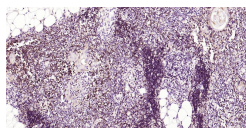
Paraformaldehyde-fixed, paraffin embedded Human Tonsil; Antigen retrieval by boiling in sodium citrate buffer (pH6.0) for 15 min; Antibody incubation with CD3D Monoclonal Antibody, Unconjugated(bsm-52744R) at 1:200 overnight at 4°C, followed by conjugation to the bs-0295G-HRP and DAB (C-0010) staining.



Paraformaldehyde-fixed, paraffin embedded Human Lymph; Antigen retrieval by boiling in sodium citrate buffer (pH6.0) for 15 min; Antibody incubation with CD3D Monoclonal Antibody, Unconjugated(bsm-52744R) at 1:200 overnight at 4°C, followed by conjugation to the bs-0295G-HRP and DAB (C-0010) staining.



Paraformaldehyde-fixed, paraffin embedded Human Spleen; Antigen retrieval by boiling in sodium citrate buffer (pH6.0) for 15 min; Antibody incubation with CD3D Monoclonal Antibody, Unconjugated(bsm-52744R) at 1:200 overnight at 4°C, followed by conjugation to the bs-0295G-HRP and DAB (C-0010) staining.



Paraformaldehyde-fixed, paraffin embedded Human Thymus; Antigen retrieval by boiling in sodium citrate buffer (pH6.0) for 15 min; Antibody incubation with CD3D Monoclonal Antibody, Unconjugated(bsm-52744R) at 1:200 overnight at 4°C, followed by conjugation to the bs-0295G-HRP and DAB (C-0010) staining.