
IL17RA Rabbit pAb

Catalog Number: bs-23053R

Target Protein: IL17RA

Concentration: 1mg/ml

Form: Liquid

Host: Rabbit

Clonality: Polyclonal

Isotype: IgG

Applications: WB (1:500-2000)

Reactivity: Human, Mouse (predicted:Rat)

Predicted MW: 92 kDa

Subcellular: Secreted ,Cell membrane

Locations:

Entrez Gene: 16172

Swiss Prot: Q60943

Source: KLH conjugated synthetic peptide derived from mouse IL-17R/IL-17RA/CD217:
168-178/864aa.

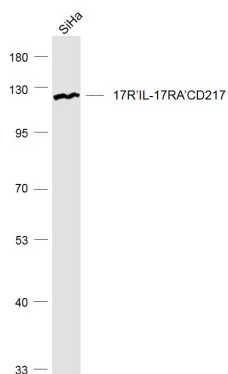
Purification: affinity purified by Protein A

Storage: 0.01M TBS (pH7.4) with 1% BSA, 0.02% Proclin300 and 50% Glycerol.

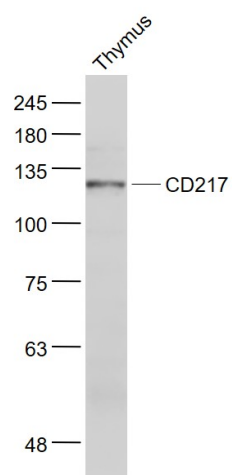
Shipped at 4°C. Store at -20°C for one year. Avoid repeated freeze/thaw cycles.

Background: Interleukin 17A (IL17A) is a proinflammatory cytokine secreted by activated T-lymphocytes. It is a potent inducer of the maturation of CD34-positive hematopoietic precursors into neutrophils. The protein encoded by this gene (interleukin 17A receptor; IL17RA) is a ubiquitous type I membrane glycoprotein that binds with low affinity to interleukin 17A. Interleukin 17A and its receptor play a pathogenic role in many inflammatory and autoimmune diseases such as rheumatoid arthritis. Like other cytokine receptors, this receptor likely has a multimeric structure. [provided by RefSeq]

VALIDATION IMAGES



Sample: SiHa (Human) Cell Lysate at 30 ug Primary: Anti-17R' IL-17RA' CD217 (bs-23053R) at 1/1000 dilution Secondary: IRDye800CW Goat Anti-Rabbit IgG at 1/20000 dilution Predicted band size: 120 kD
Observed band size: 120 kD



Sample: Thymus (Mouse) Lysate at 40 ug Primary: Anti- CD217 (bs-23053R) at 1/1000 dilution Secondary: IRDye800CW Goat Anti-Rabbit IgG at 1/20000 dilution Predicted band size: 92 kD Observed band size: 120 kD