

bs-41338R**[Primary Antibody]****GLUT1 Rabbit pAb****BioSS**
ANTIBODIES

www.bioss.com.cn

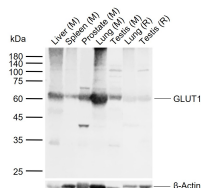
sales@bioss.com.cn

techsupport@bioss.com.cn

400-901-9800

— DATASHEET —

Host: Rabbit	Isotype: IgG	Applications: WB (1:500-2000) ELISA (1:5000-10000)
Clonality: Polyclonal		Reactivity: Human, Mouse, Rat
GeneID: 6513	SWISS: P11166	
Target: GLUT1		
Immunogen: Recombinant human GLUT1 protein: 216-280/492 .		
Purification: affinity purified by Protein A		
Concentration: 1mg/ml		Predicted MW.: 54 kDa
Storage: 0.01M TBS (pH7.4) with 1% BSA, 0.02% Proclin300 and 50% Glycerol. Shipped at 4°C. Store at -20°C for one year. Avoid repeated freeze/thaw cycles.		Subcellular Location: Extracellular matrix ,Cell membrane
Background: This gene encodes a major glucose transporter in the mammalian blood-brain barrier. Mutations in this gene have been found in a family with paroxysmal exertion-induced dyskinesia. [provided by RefSeq, Jul 2008].		

— VALIDATION IMAGES —

Sample: Lane 1: Mouse Liver tissue lysates Lane 2: Mouse Spleen tissue lysates Lane 3: Mouse Prostate tissue lysates Lane 4: Mouse Lung tissue lysates Lane 5: Mouse Testis tissue lysates Lane 6: Rat Lung tissue lysates Lane 7: Rat Testis tissue lysates Primary: Anti-GLUT1 (bs-41338R) at 1/1000 dilution Secondary: IRDye800CW Goat Anti-Rabbit IgG at 1/20000 dilution Predicted band size: 54 kDa Observed band size: 60 kDa