

bs-11334R**[Primary Antibody]****APBA1 Rabbit pAb****Bioss**
ANTIBODIES

www.bioss.com.cn

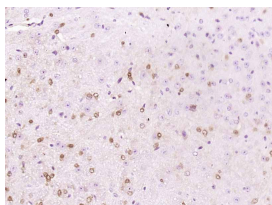
sales@bioss.com.cn

techsupport@bioss.com.cn

400-901-9800

— DATASHEET —

Host: Rabbit	Isotype: IgG	Applications: IHC-P (1:100-500) IHC-F (1:100-500) IF (1:100-500) Reactivity: Human, Mouse (predicted: Rat, Pig, Sheep, Cow, Chicken, Dog) Predicted MW.: 93 kDa Subcellular Location: Nucleus
Clonality: Polyclonal		
GeneID: 320	SWISS: Q02410	
Target: APBA1		
Immunogen: KLH conjugated synthetic peptide derived from human APBA1: 451-550/837.		
Purification: affinity purified by Protein A		
Concentration: 1mg/ml		
Storage: 0.01M TBS (pH7.4) with 1% BSA, 0.02% Proclin300 and 50% Glycerol. Shipped at 4°C. Store at -20°C for one year. Avoid repeated freeze/thaw cycles.		
Background: The Beta-Amyloid precursor protein (Beta-APP) is a major constituent of the amyloid deposits in patients with Alzheimer's disease. The Beta-Amyloid precursor is known to interact with several proteins, including X11 and the G heterotrimeric protein APP-BP1. The neuronal, transmembrane protein X11 is known to bind to the γ -Amyloid precursor protein via a phosphotyrosine binding (PTB) domain, reducing the secretion of cellular Beta-APP and slowing Beta-APP processing pathways. X11 binds specifically to the YENPTY motif, which is involved in the internalization of Beta-APP. Multiple splice variants of X11 have been identified, including X11 α (also designated Mint 1), X11Beta (Mint 2) and X11(Mint 3).		

— VALIDATION IMAGES —

Paraformaldehyde-fixed, paraffin embedded
(Mouse brain); Antigen retrieval by boiling in
sodium citrate buffer (pH6.0) for 15min; Block
endogenous peroxidase by 3% hydrogen
peroxide for 20 minutes; Blocking buffer (normal
goat serum) at 37°C for 30min; Antibody
incubation with (APBA1) Polyclonal Antibody,
Unconjugated (bs-11334R) at 1:400 overnight at
4°C, followed by operating according to SP
Kit(Rabbit) (sp-0023) instructions and DAB
staining.