

bs-18393R

[Primary Antibody]

LRRC48 Rabbit pAb

BioSS
ANTIBODIES

www.bioss.com.cn

sales@bioss.com.cn

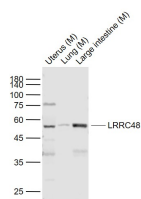
techsupport@bioss.com.cn

400-901-9800

— DATASHEET —

Host: Rabbit	Isotype: IgG	Applications: WB (1:500-2000)
Clonality: Polyclonal		Reactivity: Mouse (predicted: Human, Rat, Cynomolgus Monkey)
GeneID: 83450	SWISS: Q9H069	
Target: LRRC48		
Immunogen: KLH conjugated synthetic peptide derived from human LRRC48: 1-100/523.		Predicted MW.: 61 kDa
Purification: affinity purified by Protein A		Subcellular Location: Cell membrane
Concentration: 1mg/ml		
Storage: 0.01M TBS (pH7.4) with 1% BSA, 0.02% Proclin300 and 50% Glycerol. Shipped at 4°C. Store at -20°C for one year. Avoid repeated freeze/thaw cycles.		
Background: LRRC48 is a 523 amino acid protein that contains five LRR (leucine-rich) repeats and one LRRC domain. Existing as two alternatively spliced isoforms, LRRC48 is encoded by human chromosome 17p11.2.		

— VALIDATION IMAGES —



Sample: Lane 1: Uterus (Mouse) Lysate at 40 ug
Lane 2: Lung (Mouse) Lysate at 40 ug Lane 3:
Large intestine (Mouse) Lysate at 40 ug Primary:
Anti- LRRC48 (bs-18393R) at 1/1000 dilution
Secondary: IRDye800CW Goat Anti-Rabbit IgG at
1/20000 dilution Predicted band size: 61/53 kD
Observed band size: 53 kD