

**bs-22375R****[ Primary Antibody ]****GLUT3 Rabbit pAb****BioSS**  
**ANTIBODIES**

www.bioss.com.cn

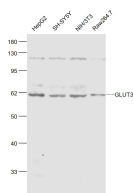
sales@bioss.com.cn

techsupport@bioss.com.cn

400-901-9800

**— DATASHEET —**

<b>Host:</b> Rabbit	<b>Isotype:</b> IgG	<b>Applications:</b> WB (1:500-2000)
<b>Clonality:</b> Polyclonal		<b>Reactivity:</b> Human, Mouse (predicted: Rat)
<b>GeneID:</b> 20527	<b>SWISS:</b> P32037	
<b>Target:</b> GLUT3		<b>Predicted MW.:</b> 54 kDa
<b>Immunogen:</b> KLH conjugated synthetic peptide derived from mouse GLUT3 : 431-496/496. < Cytoplasmic >		<b>Subcellular Location:</b> Cell membrane
<b>Purification:</b> affinity purified by Protein A		
<b>Concentration:</b> 1mg/ml		
<b>Storage:</b> 0.01M TBS (pH7.4) with 1% BSA, 0.02% Proclin300 and 50% Glycerol. Shipped at 4°C. Store at -20°C for one year. Avoid repeated freeze/thaw cycles.		
<b>Background:</b> May act as a glucose transporter in neurons; may mediate increased glucose uptake in response to neuronal injury. Glucose is fundamental to the metabolism of mammalian cells. Several glucose transporter protein (Glut) isoforms have been identified and shown to function in response to insulin and IGF1 induced signaling. GLUT3 is detectable in a few normal cell type spermatids in testis with active spermatogenesis, placental trophoblast membranes, and neurons in brain. GLUT3 staining is also detectable in human cancers including those of the ovary, lung, and testis. Alternative names: FLJ90380; Glucose Transporter Type 3; Glucose transporter type 3 brain; GLUT 3; GLUT3; SLC2A3; Solute Carrier Family 2 (Facilitated Glucose Transporter) Member 3.		

**— VALIDATION IMAGES —**

Sample: HepG2(Human) Cell Lysate at 30 ug SH-

SY5Y(Human) Cell Lysate at 30 ug

NIH/3T3(Mouse) Cell Lysate at 30 ug

Raw264.7(Mouse) Cell Lysate at 30 ug Primary:

Anti-GLUT3 (bs-22375R) at 1/1000 dilution

Secondary: IRDye800CW Goat Anti-Rabbit IgG at

1/20000 dilution Predicted band size: 54/60 kD

Observed band size: 60 kD