

[Primary Antibody]

HDAC2 Recombinant Rabbit mAb



BioSS
ANTIBODIES

www.bioss.com.cn

sales@bioass.com.cn

techsupport@bioss.com.cn

400-901-9800

— DATASHEET

Host: Rabbit

Clonality: Recombinant

GeneID: 3066

Target: HDAC2

Immunogen: A synthesized peptide derived from human HDAC2: 1-35.

Purification: affinity purified by Protein A

Concentration: 1mg/ml

Storage: 0.01M TBS (pH7.4) with 1% BSA, 0.02% Proclin300 and 50% Glycerol.
Shipped at 4°C. Store at -20°C for one year. Avoid repeated freeze/thaw cycles.

Background: This gene product belongs to the histone deacetylase family. Histone deacetylases act via the formation of large multiprotein complexes, and are responsible for the deacetylation of lysine residues at the N-terminal regions of core histones (H2A, H2B, H3 and H4). This protein forms transcriptional repressor complexes by associating with many different proteins, including YY1, a mammalian zinc-finger transcription factor. Thus, it plays an important role in transcriptional regulation, cell cycle progression and developmental events. Alternative splicing results in multiple transcript variants. [provided by RefSeq].

Isotype: IgG

CloneNo.: 3F9

SWISS: 092769

Applications: WB (1:500-2000)

Flow-Cyt (1μg/Test)

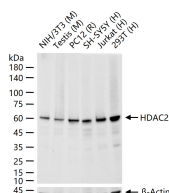
ICC/IF (1:50-1:200)

Reactivity: Human, Mouse, Rat

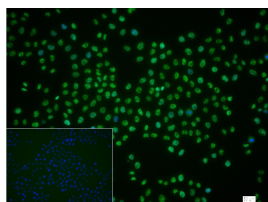
Predicted
MW.: 53 kDa

Subcellular Location: Nucleus

— VALIDATION IMAGES



25 ug total protein per lane of various lysates (see on figure) probed with HDAC2 monoclonal antibody, unconjugated (bsm-52083R) at 1:1000 dilution and 4°C overnight incubation. Followed by conjugated secondary antibody incubation at r.t. for 60 min.



4% Paraformaldehyde-fixed Hela (H) cell; Triton X-100 at r.t. for 20 min; Antibody incubation with (HDAC2) monoclonal Antibody, unconjugated (bsm-52083R) 1:100, 90 min at 37°C; followed by conjugated Goat Anti-Rabbit IgG antibody (green, bs-04295G-FITC) at 37°C for 90 min, DAPI (blue, C02-04002) was used to stain the cell nuclei. PBS instead of the primary antibody was used as the blank control.