

Nucleostemin Rabbit pAb

Catalog Number: bs-6846R

Target Protein: Nucleostemin

Concentration: 1mg/ml

Form: Liquid

Host: Rabbit

Clonality: Polyclonal

Isotype: IgG

Applications: WB (1:500-2000)

Reactivity: Mouse (predicted:Human, Rat, Pig, Sheep, Cow, Dog)

Predicted MW: 62 kDa

Entrez Gene: 26354

Swiss Prot: Q9BVP2

Source: KLH conjugated synthetic peptide derived from human Nucleostemin: 101-160/548.

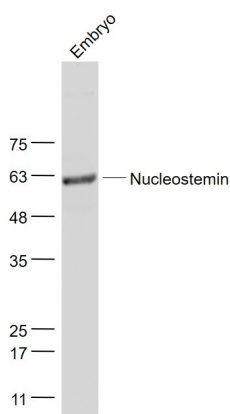
Purification: affinity purified by Protein A

Storage: 0.01M TBS (pH7.4) with 1% BSA, 0.02% Proclin300 and 50% Glycerol.

Shipped at 4°C. Store at -20°C for one year. Avoid repeated freeze/thaw cycles.

Background: Nucleostemin is a protein found in the nucleoli of embryonic stem cells, adult CNS stem cells, primitive cells in the bone marrow and cancer cells. It is not in the differentiated cells of most adult tissues. It has been suggested to play a role in controlling the cell cycle progression in stem cells and cancer cells.

VALIDATION IMAGES



Sample: Embryo(Mouse) Lysate at 40 ug Primary: Anti- Nucleostemin (bs-6846R) at 1/1000 dilution
Secondary: IRDye800CW Goat Anti-Rabbit IgG at 1/20000 dilution Predicted band size: 62 kD Observed band size: 62 kD