

**bs-9355R****[ Primary Antibody ]****Proteasome 20S alpha 6 Rabbit pAb****Bioss**  
**ANTIBODIES**

www.bioss.com.cn

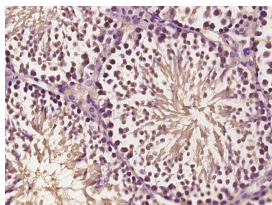
sales@bioss.com.cn

techsupport@bioss.com.cn

400-901-9800

**— DATASHEET —**

<b>Host:</b> Rabbit	<b>Isotype:</b> IgG	<b>Applications:</b> <b>IHC-P</b> (1:100-500) <b>IHC-F</b> (1:100-500) <b>IF</b> (1:50-200)  <b>Reactivity:</b> Mouse (predicted: Human, Rat, Pig, Sheep, Chicken, Dog, Horse)  <b>Predicted MW.:</b> 27 kDa  <b>Subcellular Location:</b> Cytoplasm ,Nucleus
<b>Clonality:</b> Polyclonal		
<b>GeneID:</b> 5687	<b>SWISS:</b> P60900	
<b>Target:</b> Proteasome 20S alpha 6		
<b>Immunogen:</b> KLH conjugated synthetic peptide derived from human PSMA6: 1-100/246.		
<b>Purification:</b> affinity purified by Protein A		
<b>Concentration:</b> 1mg/ml		
<b>Storage:</b> 0.01M TBS (pH7.4) with 1% BSA, 0.02% Proclin300 and 50% Glycerol. Shipped at 4°C. Store at -20°C for one year. Avoid repeated freeze/thaw cycles.		
<b>Background:</b> The gene encodes a 246-amino acid polypeptide containing an RNA binding motif, a putative nuclear localization signal, and phosphorylation sites. The alpha subunits comprises the outer rings of the proteasome. Some alpha subunits contain a functional nuclear localization signal; proteasomes are found in both the nuclear and cytoplasmic compartments of the cell. Alpha subunits may constitute a physical barrier that limits access of cytosolic proteins into the inner proteolytic chamber.		

**— VALIDATION IMAGES —**

Paraformaldehyde-fixed, paraffin embedded (mouse testis tissue); Antigen retrieval by boiling in sodium citrate buffer (pH6.0) for 15min; Block endogenous peroxidase by 3% hydrogen peroxide for 20 minutes; Blocking buffer (normal goat serum) at 37°C for 30min; Antibody incubation with (PSMA6) Polyclonal Antibody, Unconjugated (bs-9355R) at 1:400 overnight at 4°C, followed by operating according to SP Kit(Rabbit) (sp-0023) instructions and DAB staining.