

**bs-6872R****[ Primary Antibody ]****RING finger protein 189 Rabbit pAb****BioSS**  
**ANTIBODIES**

www.bioss.com.cn

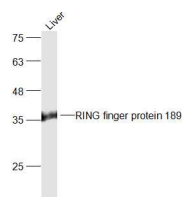
sales@bioss.com.cn

techsupport@bioss.com.cn

400-901-9800

**— DATASHEET —**

<b>Host:</b> Rabbit	<b>Isotype:</b> IgG	<b>Applications:</b> WB (1:500-2000)
<b>Clonality:</b> Polyclonal		<b>Reactivity:</b> Human, Mouse (predicted: Rat, Rabbit, Pig, Sheep, Cow, Dog)
<b>GeneID:</b> 117584	<b>SWISS:</b> Q8WZ73	
<b>Target:</b> RING finger protein 189		<b>Predicted MW.:</b> 40 kDa
<b>Immunogen:</b> KLH conjugated synthetic peptide derived from human RING finger protein 189: 251-363/363.		<b>Subcellular Location:</b> Cell membrane ,Cytoplasm
<b>Purification:</b> affinity purified by Protein A		
<b>Concentration:</b> 1mg/ml		
<b>Storage:</b> 0.01M TBS (pH7.4) with 1% BSA, 0.02% Proclin300 and 50% Glycerol. Shipped at 4°C. Store at -20°C for one year. Avoid repeated freeze/thaw cycles.		
<b>Background:</b> Has E3 ubiquitin protein ligase activity. Regulates the levels of CASP8 and CASP10 by targeting them for proteasomal degradation. Has anti-apoptotic activity. May bind phosphatidylinositol phosphates.		

**— VALIDATION IMAGES —**

Sample: Liver (Mouse) Lysate at 40 ug Primary:  
Anti-RING finger protein 189 (bs-6872R) at 1/300  
dilution Secondary: IRDye800CW Goat Anti-  
Rabbit IgG at 1/20000 dilution Predicted band  
size: 40 kD Observed band size: 40 kD