

**bs-6867R****[ Primary Antibody ]****NLRP9 Rabbit pAb****BioSS**  
ANTIBODIES

www.bioss.com.cn

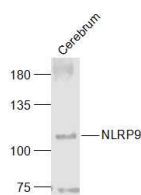
sales@bioss.com.cn

techsupport@bioss.com.cn

400-901-9800

**— DATASHEET —**

<b>Host:</b> Rabbit	<b>Isotype:</b> IgG	<b>Applications:</b> WB (1:500-2000)
<b>Clonality:</b> Polyclonal		<b>Reactivity:</b> Mouse (predicted: Human, Rat)
<b>GeneID:</b> 338321	<b>SWISS:</b> Q7RTR0	
<b>Target:</b> NLRP9		<b>Predicted MW.:</b> 109 kDa
<b>Immunogen:</b> KLH conjugated synthetic peptide derived from human NLRP9: 701-800/991.		<b>Subcellular Location:</b> Cytoplasm
<b>Purification:</b> affinity purified by Protein A		
<b>Concentration:</b> 1mg/ml		
<b>Storage:</b> 0.01M TBS (pH7.4) with 1% BSA, 0.02% Proclin300 and 50% Glycerol. Shipped at 4°C. Store at -20°C for one year. Avoid repeated freeze/thaw cycles.		
<b>Background:</b> The protein encoded by this gene belongs to the NALP protein family. Members of the NALP protein family typically contain a NACHT domain, a NACHT-associated domain (NAD), a C-terminal leucine-rich repeat (LRR) region, and an N-terminal pyrin domain (PYD). This protein may play a regulatory role in the innate immune system as similar family members belong to the signal-induced multiprotein complex, the inflammasome, that activates the pro-inflammatory caspases, caspase-1 and caspase-5. [provided by RefSeq, Jul 2008].		

**— VALIDATION IMAGES —**

Sample: Cerebrum (Mouse) Lysate at 40 ug  
Primary: Anti-NLRP9 (bs-6867R) at 1/1000  
dilution Secondary: IRDye800CW Goat Anti-Rabbit IgG at 1/20000 dilution Predicted band size: 109 kD Observed band size: 109 kD