
ARFRP1 Rabbit pAb

Catalog Number: bs-12514R

Target Protein: ARFRP1

Concentration: 1mg/ml

Form: Liquid

Host: Rabbit

Clonality: Polyclonal

Isotype: IgG

Applications: WB (1:500-2000)

Reactivity: Human (predicted: Mouse, Rat, Pig, Sheep, Dog, Horse)

Predicted MW: 23 kDa

Entrez Gene: 10139

Swiss Prot: Q13795

Source: KLH conjugated synthetic peptide derived from human ARFRP1: 1-100/201.

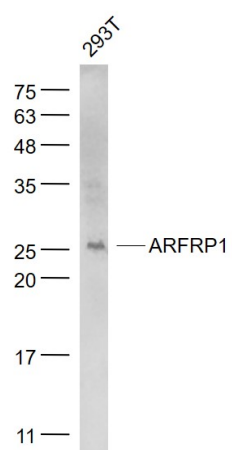
Purification: affinity purified by Protein A

Storage: 0.01M TBS (pH7.4) with 1% BSA, 0.02% Proclin300 and 50% Glycerol.

Shipped at 4°C. Store at -20°C for one year. Avoid repeated freeze/thaw cycles.

Background: The ADP-ribosylation factor (ARF) protein family are structurally and functionally conserved members of the Ras superfamily of regulatory GTP-binding proteins. ARFs influence vesicle trafficking and signal transduction in eukaryotic cells and they play a central role in the maintenance of organelle integrity, assembly of coat proteins and activation of phospholipase D (PC-PLD). ARFRP1 (ADP-ribosylation factor related protein 1), also known as ARP or ARL18, is a 201 amino acid membrane-associated GTPase that localizes to the plasma membrane and the Golgi apparatus and is related to the ARF family of regulatory proteins. Expressed in a variety of tissues, ARFRP1 interacts with SYS1 and is thought to be involved in plasma membrane-related signaling events. ARFRP1 exists as multiple alternatively spliced isoforms and is encoded by a gene which maps to a gene cluster on chromosome 20 that is commonly overexpressed in tumors, suggesting a role for ARFRP1 in carcinogenesis.

VALIDATION IMAGES



Sample: 293T(Human) Cell Lysate at 30 ug Primary: Anti- ARFRP1 (bs-12514R) at 1/1000 dilution Secondary: IRDye800CW Goat Anti-Rabbit IgG at 1/20000 dilution Predicted band size: 23 kD Observed band size: 25 kD