

**bs-9422R****[ Primary Antibody ]****TSPAN14 Rabbit pAb****BioSS**  
**ANTIBODIES**

www.bioss.com.cn

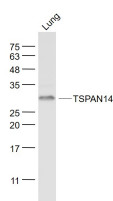
sales@bioss.com.cn

techsupport@bioss.com.cn

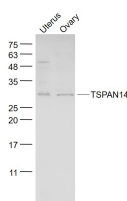
400-901-9800

**— DATASHEET —**

<b>Host:</b> Rabbit	<b>Isotype:</b> IgG	<b>Applications:</b> WB (1:500-2000)
<b>Clonality:</b> Polyclonal		<b>Reactivity:</b> Mouse (predicted: Human, Rat, Rabbit)
<b>GeneID:</b> 81619	<b>SWISS:</b> Q8NG11	
<b>Target:</b> TSPAN14		<b>Predicted MW.:</b> 31 kDa
<b>Immunogen:</b> KLH conjugated synthetic peptide derived from human TSPAN14: 151-250/270.		<b>Subcellular Location:</b> Cell membrane
<b>Purification:</b> affinity purified by Protein A		
<b>Concentration:</b> 1mg/ml		
<b>Storage:</b> 0.01M TBS (pH7.4) with 1% BSA, 0.02% Proclin300 and 50% Glycerol. Shipped at 4°C. Store at -20°C for one year. Avoid repeated freeze/thaw cycles.		

**— VALIDATION IMAGES —**

Sample: Lung (Mouse) Lysate at 40 ug Primary:  
Anti- TSPAN14 (bs-9422R) at 1/1000 dilution  
Secondary: IRDye800CW Goat Anti-Rabbit IgG at  
1/20000 dilution Predicted band size: 31 kD  
Observed band size: 31 kD



Sample: Uterus (Mouse) Lysate at 40 ug Ovary  
(Mouse) Lysate at 40 ug Primary: Anti- TSPAN14  
(bs-9422R) at 1/1000 dilution Secondary:  
IRDye800CW Goat Anti-Rabbit IgG at 1/20000  
dilution Predicted band size: 31 kD Observed  
band size: 31 kD

**— SELECTED CITATIONS —**

- **[IF=2.24]** Siles-Lucas, Mar, et al. "Isolation and characterization of exosomes derived from fertile sheep hydatid cysts." Veterinary Parasitology (2017). WB ;="Sheep". 28288760