
CADM3 Rabbit pAb

Catalog Number: bs-6027R

Target Protein: CADM3

Concentration: 1mg/ml

Form: Liquid

Host: Rabbit

Clonality: Polyclonal

Isotype: IgG

Applications: WB (1:500-2000)

Reactivity: Human, Mouse, Rat (predicted:Rabbit, Pig, Cow, Dog, Horse)

Predicted MW: 41 kDa

Entrez Gene: 57863

Swiss Prot: Q8N126

Source: KLH conjugated synthetic peptide derived from human CADM3: 101-200/398.

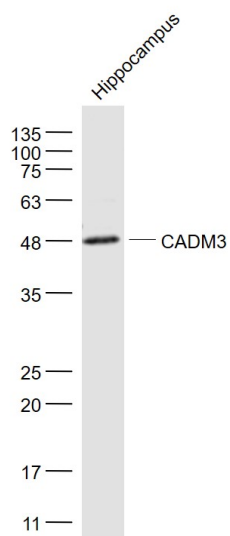
Purification: affinity purified by Protein A

Storage: 0.01M TBS (pH7.4) with 1% BSA, 0.02% Proclin300 and 50% Glycerol.

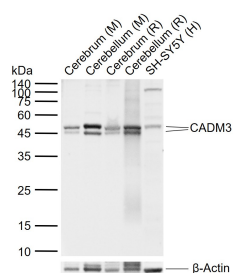
Shipped at 4°C. Store at -20°C for one year. Avoid repeated freeze/thaw cycles.

Background: Immunoglobulin superfamily member 4B (Cell adhesion molecule 3, Nectin-like protein 1) is a nectin family gene product that contains 2 Ig-like C2-type (immunoglobulin-like) domains and an Ig-like V-type (immunoglobulin-like) domain. IGSF4B is a single-pass type I membrane protein that localizes to cell-cell interacting sites along the plasma membrane. IGSF4B functions as a cell adhesion molecule at cell-cell junctions. IGSF4B can be found as a homodimer and has a dual calcium-independent adhesion function; a homophilic cell-cell interaction and a heterophilic cell-cell interaction involving IGSF4, Nectin 1 and Nectin 3. IGSF4B may also interact with EPB41L1 which has a potential for regulating structure or function of cell-cell junctions. By similarity. Isoform 1 is expressed in adult and fetal brain. Isoform 2 is highly expressed in the cerebellum but is also weakly expressed in placenta. IGSF4B has been found to be markedly over-expressed in glioma cell lines and prostate cancer cell lines.

VALIDATION IMAGES



Sample: Hippocampus (Mouse) Lysate at 40 ug Primary: Anti- CADM3 (bs-6027R) at 1/1000 dilution
 Secondary: IRDye800CW Goat Anti-Rabbit IgG at 1/20000 dilution Predicted band size: 41 kD Observed band size: 48 kD



Sample: Lane 1: Mouse Cerebrum tissue lysates Lane 2: Mouse Cerebellum tissue lysates Lane 3: Rat Cerebrum tissue lysates Lane 4: Rat Cerebellum tissue lysates Lane 5: Human SH-SY5Y cell lysates Primary: Anti-CADM3 (bs-6027R) at 1/1000 dilution Secondary: IRDye800CW Goat Anti-Rabbit IgG at 1/20000 dilution Predicted band size: 41 kDa Observed band size: 45,47 kDa