

bs-9528R**[Primary Antibody]****TMEM208 Rabbit pAb****BioSS**
ANTIBODIES

www.bioss.com.cn

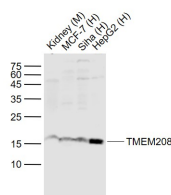
sales@bioss.com.cn

techsupport@bioss.com.cn

400-901-9800

— DATASHEET —

Host: Rabbit	Isotype: IgG	Applications: WB (1:500-2000)
Clonality: Polyclonal		
GeneID: 29100	SWISS: Q9BTX3	
Target: TMEM208		
Immunogen: KLH conjugated synthetic peptide derived from human TMEM208: 1-80/173.		
Purification: affinity purified by Protein A		
Concentration: 1mg/ml		
Storage: 0.01M TBS (pH7.4) with 1% BSA, 0.02% Proclin300 and 50% Glycerol. Shipped at 4°C. Store at -20°C for one year. Avoid repeated freeze/thaw cycles.		
		Reactivity: Human, Mouse
		Predicted MW.: 20 kDa
		Subcellular Location: Cell membrane

— VALIDATION IMAGES —

Sample: Lane 1: Kidney (Mouse) Lysate at 40 ug
Lane 2: MCF-7 (Human) Cell Lysate at 30 ug Lane
3: SiHa (Human) Cell Lysate at 30 ug Lane 4:
HepG2 (Human) Cell Lysate at 30 ug Primary:
Anti-TMEM208 (bs-9528R) at 1/1000 dilution
Secondary: IRDye800CW Goat Anti-Rabbit IgG at
1/20000 dilution Predicted band size: 19 kD
Observed band size: 17 kD