

bs-1585R

[Primary Antibody]

BioSS
ANTIBODIES

www.bioss.com.cn

sales@bioss.com.cn

techsupport@bioss.com.cn

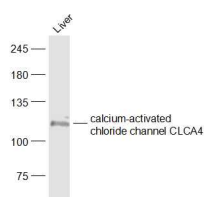
400-901-9800

calcium-activated chloride channel CLCA4 Rabbit pAb

— DATASHEET —

Host: Rabbit	Isotype: IgG	Applications: WB (1:500-2000)
Clonality: Polyclonal		
Target: calcium-activated chloride channel CLCA4		
Immunogen: KLH conjugated synthetic peptide derived from mouse chloride channel calcium activated 3B precursor: 651-750/1044.		
Purification: affinity purified by Protein A		
Concentration: 1mg/ml		Reactivity: Mouse (predicted: Rat)
Storage: 0.01M TBS (pH7.4) with 1% BSA, 0.02% Proclin300 and 50% Glycerol. Shipped at 4°C. Store at -20°C for one year. Avoid repeated freeze/thaw cycles.		Predicted MW.: 110 kDa

— VALIDATION IMAGES —



Sample: Liver (Mouse) Lysate at 40 ug Primary:
Anti-calcium-activated chloride channel CLCA4
(bs-1585R) at 1/500 dilution Secondary:
IRDye800CW Goat Anti-Rabbit IgG at 1/20000
dilution Predicted band size: 110 kD Observed
band size: 110 kD