

bs-6019R**[Primary Antibody]****BioSS**
ANTIBODIES

www.bioss.com.cn

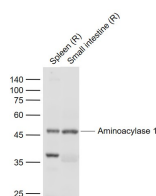
sales@bioss.com.cn

techsupport@bioss.com.cn

400-901-9800

Aminoacylase 1 Rabbit pAb**— DATASHEET —**

Host: Rabbit	Isotype: IgG	Applications: WB (1:500-2000)
Clonality: Polyclonal		
GeneID: 95	SWISS: Q03154	
Target: Aminoacylase 1		
Immunogen: KLH conjugated synthetic peptide derived from human ACY1/Aminoacylase 1: 201-300/408.		
Purification: affinity purified by Protein A		Reactivity: Rat (predicted: Human, Mouse, Pig, Cow, Horse)
Concentration: 1mg/ml		Predicted MW.: 46 kDa
Storage: 0.01M TBS (pH7.4) with 1% BSA, 0.02% Proclin300 and 50% Glycerol. Shipped at 4°C. Store at -20°C for one year. Avoid repeated freeze/thaw cycles.		Subcellular Location: Cytoplasm
Background: Aminoacylase 1 is a cytosolic, homodimeric, zinc binding enzyme that catalyzes the hydrolysis of acylated L amino acids to L amino acids and acyl group, and has been postulated to function in the catabolism and salvage of acylated amino acids. ACY1 has been assigned to chromosome 3p21.1, a region reduced to homozygosity in small cell lung cancer (SCLC), and its expression has been reported to be reduced or undetectable in SCLC cell lines and tumors. The amino acid sequence of human aminoacylase 1 is highly homologous to the porcine counterpart, and ACY1 is the first member of a new family of zinc binding enzymes.		

— VALIDATION IMAGES —

Sample: Lane 1: Spleen (Rat) Lysate at 40 ug
Lane 2: Small intestine (Rat) Lysate at 40 ug
Primary: Anti-Aminoacylase 1 (bs-6019R) at 1/1000 dilution
Secondary: IRDye800CW Goat Anti-Rabbit IgG at 1/20000 dilution
Predicted band size: 46 kD
Observed band size: 46 kD