

bs-5528R**[Primary Antibody]****FXR1 Rabbit pAb****BioSS**
ANTIBODIES

www.bioss.com.cn

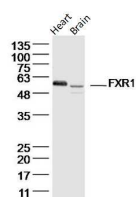
sales@bioss.com.cn

techsupport@bioss.com.cn

400-901-9800

— DATASHEET —

Host: Rabbit	Isotype: IgG	Applications: WB (1:500-2000)
Clonality: Polyclonal		Reactivity: Mouse (predicted: Human, Rat, Rabbit, Pig, Cow, Dog)
GeneID: 8087	SWISS: P51114	
Target: FXR1		Predicted MW.: 62-74 kDa
Immunogen: KLH conjugated synthetic peptide derived from human FXR1: 121-220/621.		Subcellular Location: Cytoplasm
Purification: affinity purified by Protein A		
Concentration: 1mg/ml		
Storage: 0.01M TBS (pH7.4) with 1% BSA, 0.02% Proclin300 and 50% Glycerol. Shipped at 4°C. Store at -20°C for one year. Avoid repeated freeze/thaw cycles.		
Background: The protein encoded by this gene is an RNA binding protein that interacts with the functionally-similar proteins FMR1 and FXR2. These proteins shuttle between the nucleus and cytoplasm and associate with polyribosomes, predominantly with the 60S ribosomal subunit. Three transcript variants encoding different isoforms have been found for this gene. [provided by RefSeq]		

— VALIDATION IMAGES —

Sample: Heart (Mouse) Lysate at 40 ug Brain
(Mouse) Lysate at 40 ug Primary: Anti-FXR1
(bs-5528R) at 1/300 dilution Secondary:
IRDye800CW Goat Anti-Rabbit IgG at 1/20000
dilution Predicted band size: 62-74 kD Observed
band size: 60 kD

— SELECTED CITATIONS —

- **[IF=5.717]** Jianlong Du. et al. FXR, a Key Regulator of Lipid Metabolism, Is Inhibited by ER Stress-Mediated Activation of JNK and p38 MAPK in Large Yellow Croakers (*Larimichthys crocea*) Fed High Fat Diets. *Nutrients*. 2021 Dec;13(12):4343 WB ;Fish. 34959897
- **[IF=4.8]** Ziyu Guo. et al. The intestinal absorption of triptolide for the treatment of rheumatoid arthritis is mediated by transporters. *INT IMMUNOPHARMACOL*. 2024 Dec;143:113440 WB ;Rat. 39471693
- **[IF=3.82]** Zhao, Guolin, et al. "8-Methoxypsoralen disrupts MDR3-mediated phospholipids efflux and bile acid homeostasis and its relevance to hepatotoxicity." *Toxicology* (2017). WB ;="Rat". 28552422