

bs-4308R**[Primary Antibody]****phospho-IRE1a (Ser 726) Rabbit pAb****BioSS**
ANTIBODIES

www.bioss.com.cn

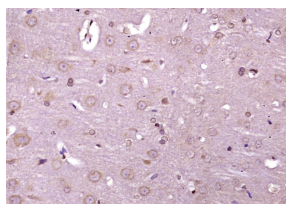
sales@bioss.com.cn

techsupport@bioss.com.cn

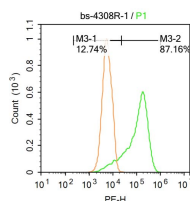
400-901-9800

— DATASHEET —

Host: Rabbit	Isotype: IgG	Applications: IHC-P (1:100-500)
Clonality: Polyclonal		IHC-F (1:100-500)
GeneID: 10595	SWISS: O75460	IF (1:100-500)
Target: phospho-IRE1a (Ser 726)		Flow-Cyt (1ug/test)
Immunogen: KLH conjugated synthesised phosphopeptide derived from human IRE1a around the phosphorylation site of Ser726 : SF(p-S)RR.		Reactivity: Human, Mouse, Rat (predicted: Rabbit, Pig, Cow, Dog, Horse)
Purification: affinity purified by Protein A		Predicted MW.: 107 kDa
Concentration: 1mg/ml		Subcellular Location: Cell membrane ,Cytoplasm
Storage: 0.01M TBS (pH7.4) with 1% BSA, 0.02% Proclin300 and 50% Glycerol. Shipped at 4°C. Store at -20°C for one year. Avoid repeated freeze/thaw cycles.		
Background: ERN2, endoplasmic reticulum to nucleus signaling 2, induces translational repression through 28S ribosomal RNA cleavage in response to ER stress. It is pro-apoptotic and appears to play no role in the unfolded-protein response, unlike closely related proteins.		

— VALIDATION IMAGES —

Paraformaldehyde-fixed, paraffin embedded (rat brain tissue); Antigen retrieval by boiling in sodium citrate buffer (pH6.0) for 15min; Block endogenous peroxidase by 3% hydrogen peroxide for 20 minutes; Blocking buffer (normal goat serum) at 37°C for 30min; Antibody incubation with (IRE1a (Ser 726)) Polyclonal Antibody, Unconjugated (bs-4308R) at 1:400 overnight at 4°C, followed by operating according to SP Kit(Rabbit) (sp-0023) instructions and DAB staining.



Blank control: Raji. Primary Antibody (green line): Rabbit Anti-phospho-IRE1a (Ser 726) antibody (bs-4308R) Dilution: 1μg /10⁶ cells; Isotype Control Antibody (orange line): Rabbit IgG . Secondary Antibody : Goat anti-rabbit IgG-PE Dilution: 1μg /test. Protocol The cells were fixed with 4% PFA (10min at room temperature) and then permeabilized with PBST for 20 min at room temperature. The cells were then incubated in 5%BSA to block non-specific protein-protein interactions for 30 min at room temperature. Cells stained with Primary Antibody for 30 min at room temperature. The secondary antibody used for 40 min at room temperature. Acquisition of 20,000 events was performed.

— SELECTED CITATIONS —

- **[IF=5.878]** Xueying Zhang. et al. Scutellarin ameliorates hepatic lipid accumulation by enhancing autophagy and suppressing IRE1α/XBP1 pathway. 2021 Dec 02 WB ;Mouse ,Human. 34859513
- **[IF=5.546]** Donghui Yang. et al. Melatonin alleviates LPS - induced endoplasmic reticulum stress and inflammation in spermatogonial stem cells. J Cell Physiol. 2021 May;236(5):3536-3551 WB,IF,IHC ;Mouse. 32996162
- **[IF=5.778]** Yuting Wang. et al. Polybrominated diphenyl ethers quinone-induced intracellular protein oxidative damage triggers ubiquitin-proteasome and autophagy-lysosomal system activation in LO2 cells. Chemosphere. 2021

Important Note: This product as supplied is intended for research use only, not for use in human, therapeutic or diagnostic applications.

Jul;275:130034 WB ;Human. 33652285

- **[IF=4.86]** Jiang, Mingfang, et al. "Down-regulation of miR-384-5p Attenuates Rotenone-induced Neurotoxicity in Dopaminergic SH-SY5Y Cells Through Inhibiting Endoplasmic Reticulum Stress." American Journal of Physiology-Cell Physiology (2016): ajpccell-00226. WB ;="Human". 26864693
- **[IF=5.193]** Xu S et al. Mesencephalic astrocyte-derived neurotrophic factor (MANF) protects against A β toxicity via attenuating A β -induced endoplasmic reticulum stress. J Neuroinflammation. 2019 Feb 13;16(1):35. WB ;Human. 30760285