

**bs-21706R****[ Primary Antibody ]****PLTP Rabbit pAb****Bioss**  
**ANTIBODIES**

www.bioss.com.cn

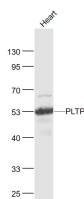
sales@bioss.com.cn

techsupport@bioss.com.cn

400-901-9800

**— DATASHEET —**

<b>Host:</b> Rabbit	<b>Isotype:</b> IgG	<b>Applications:</b> WB (1:500-2000)
<b>Clonality:</b> Polyclonal		<b>Reactivity:</b> Mouse (predicted: Rat, Rabbit)
<b>GeneID:</b> 5360	<b>SWISS:</b> P55058	
<b>Target:</b> PLTP		<b>Predicted MW.:</b> 53 kDa
<b>Immunogen:</b> KLH conjugated synthetic peptide derived from human PLTP: 170-270/493.		<b>Subcellular Location:</b> Secreted
<b>Purification:</b> affinity purified by Protein A		
<b>Concentration:</b> 1mg/ml		
<b>Storage:</b> 0.01M TBS (pH7.4) with 1% BSA, 0.02% Proclin300 and 50% Glycerol. Shipped at 4°C. Store at -20°C for one year. Avoid repeated freeze/thaw cycles.		
<b>Background:</b> The protein encoded by this gene is one of at least two lipid transfer proteins found in human plasma. The encoded protein transfers phospholipids from triglyceride-rich lipoproteins to high density lipoprotein (HDL). In addition to regulating the size of HDL particles, this protein may be involved in cholesterol metabolism. At least two transcript variants encoding different isoforms have been found for this gene. [provided by RefSeq].		

**— VALIDATION IMAGES —**

Sample: Heart (Mouse) Lysate at 40 ug Primary:  
Anti- PLTP (bs-21706R) at 1/1000 dilution  
Secondary: IRDye800CW Goat Anti-Rabbit IgG at  
1/20000 dilution Predicted band size: 53 kD  
Observed band size: 53 kD