

**bs-14253R****[ Primary Antibody ]****Bioss**  
ANTIBODIES

www.bioss.com.cn

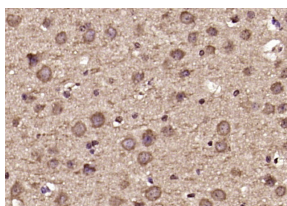
sales@bioss.com.cn

techsupport@bioss.com.cn

400-901-9800

**DDX60 Rabbit pAb****— DATASHEET —**

<b>Host:</b> Rabbit	<b>Isotype:</b> IgG	<b>Applications:</b> IHC-P (1:100-500)
<b>Clonality:</b> Polyclonal		<b>IHC-F</b> (1:100-500)
<b>GeneID:</b> 55601	<b>SWISS:</b> Q8IY21	<b>IF</b> (1:100-500)
<b>Target:</b> DDX60		<b>Reactivity:</b> Mouse (predicted: Human, Rat)
<b>Immunogen:</b> KLH conjugated synthetic peptide derived from human DDX60: 81-180/1712.		
<b>Purification:</b> affinity purified by Protein A		<b>Predicted MW.:</b> 198 kDa
<b>Concentration:</b> 1mg/ml		<b>Subcellular Location:</b> Cytoplasm
<b>Storage:</b> 0.01M TBS (pH7.4) with 1% BSA, 0.02% Proclin300 and 50% Glycerol. Shipped at 4°C. Store at -20°C for one year. Avoid repeated freeze/thaw cycles.		
<b>Background:</b> DDX60 is a 1,712 amino acid protein belonging to the helicase family. DDX60 contains one helicase ATP-binding domain and one helicase C-terminal domain. The gene encoding DDX60 maps to human chromosome 4, which represents approximately 6% of the human genome and contains nearly 900 genes. Notably, the Huntington gene, which is found to encode an expanded glutamine tract in cases of Huntington's disease, is on chromosome 4. FGFR-3 is also encoded on chromosome 4 and has been associated with thanatophoric dwarfism, achondroplasia, Muenke syndrome and bladder cancer. Chromosome 4 is also tied to Ellis-van Creveld syndrome, methylmalonic acidemia and polycystic kidney disease. Chromosome 4 reportedly contains the largest gene deserts (regions of the genome with no protein encoding genes) and has one of the two lowest recombination frequencies of the human chromosomes.		

**— VALIDATION IMAGES —**

Paraformaldehyde-fixed, paraffin embedded (mouse brain); Antigen retrieval by boiling in sodium citrate buffer (pH6.0) for 15min; Block endogenous peroxidase by 3% hydrogen peroxide for 20 minutes; Blocking buffer (normal goat serum) at 37°C for 30min; Antibody incubation with (DDX60) Polyclonal Antibody, Unconjugated (bs-14253R) at 1:200 overnight at 4°C, followed by operating according to SP Kit(Rabbit) (sp-0023) instructions and DAB staining.