

bs-22016R**[Primary Antibody]****Bioss**
ANTIBODIES

www.bioss.com.cn

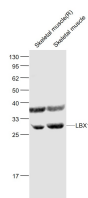
sales@bioss.com.cn

techsupport@bioss.com.cn

400-901-9800

LBX1 Rabbit pAb**— DATASHEET —**

Host: Rabbit Clonality: Polyclonal GeneID: 10660 Target: LBX1 Immunogen: KLH conjugated synthetic peptide derived from human LBX1 : 61-160/281. Purification: affinity purified by Protein A Concentration: 1mg/ml Storage: 0.01M TBS (pH7.4) with 1% BSA, 0.02% Proclin300 and 50% Glycerol. Shipped at 4°C. Store at -20°C for one year. Avoid repeated freeze/thaw cycles. Background: The human homolog of the Drosophila lady bird late gene, LBX1, is specifically expressed in the developing central nervous system and musculoskeletal system. The LBX1 gene has a restrictive expression pattern in the dorsal portion of the mantle of the spinal cord and the hindbrain of the CNS. In the developing mouse and chicken musculoskeletal system, Lbx1 is expressed in migrating limb muscle precursor cells. In addition, Lbx1 may regulate migratory patterns of limb muscle cell precursors and may be essential to dorsal identification of forelimb muscles.	Isotype: IgG SWISS: P52954	Applications: WB (1:500-2000) Reactivity: Mouse, Rat (predicted: Human, Rabbit, Pig, Cow, Chicken, Dog, Horse) Predicted MW.: 30 kDa Subcellular Location: Nucleus
---	---	--

— VALIDATION IMAGES —

Sample: Skeletal muscle (Rat) Lysate at 40 ug
Skeletal muscle (Mouse) Lysate at 40 ug Primary:
Anti- LBX1 (bs-22016R) at 1/1000 dilution
Secondary: IRDye800CW Goat Anti-Rabbit IgG at
1/20000 dilution Predicted band size: 30 kD
Observed band size: 30 kD