

bs-21015R**[Primary Antibody]****Pannexin 1 Rabbit pAb****Bioss**
ANTIBODIES

www.bioss.com.cn

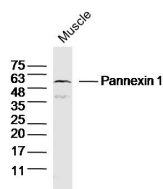
sales@bioss.com.cn

techsupport@bioss.com.cn

400-901-9800

— DATASHEET —

Host: Rabbit	Isotype: IgG	Applications: WB (1:500-2000)
Clonality: Polyclonal		Reactivity: Mouse (predicted: Human, Rat, Rabbit, Sheep, Cow, Horse)
GeneID: 24145	SWISS: Q96RD7	Predicted MW.: 48 kDa
Target: Pannexin 1		Subcellular Location: Cell membrane
Immunogen: KLH conjugated synthetic peptide derived from human Pannexin 1: 61-106/426. < Extracellular >		
Purification: affinity purified by Protein A		
Concentration: 1mg/ml		
Storage: 0.01M TBS (pH7.4) with 1% BSA, 0.02% Proclin300 and 50% Glycerol. Shipped at 4°C. Store at -20°C for one year. Avoid repeated freeze/thaw cycles.		
Background: The protein encoded by this gene belongs to the innexin family. Innexin family members are the structural components of gap junctions. This protein and pannexin 2 are abundantly expressed in central nerve system (CNS) and are coexpressed in various neuronal populations. Studies in Xenopus oocytes suggest that this protein alone and in combination with pannexin 2 may form cell type-specific gap junctions with distinct properties. [provided by RefSeq, Jul 2008]		

— VALIDATION IMAGES —

Sample: Muscle (Mouse) Lysate at 40 ug Primary:
Anti-Pannexin 1(bs-21015R) at 1/300 dilution
Secondary: IRDye800CW Goat Anti-Rabbit IgG at
1/20000 dilution Predicted band size: 48kD
Observed band size: 53kD