

[Primary Antibody]

GRAF Rabbit pAb



BioSS
ANTIBODIES

www.bioss.com.cn

sales@bioass.com.cn

techsupport@bioss.com.cn

400-901-9800

— DATASHEET

Host: Rabbit

Isotype: IgG

Applications: WB (1:500-2000)

Clonality: Polyclonal

GeneID: 23092

SWISS: Q9UNA1

Target: GRAF

Immunogen: KLH conjugated synthetic peptide derived from human GRAF1: 1-100/814.

Purification: affinity purified by Protein A

Concentration: 1mg/ml

Storage: 0.01M TBS (pH7.4) with 1% BSA, 0.02% Proclin300 and 50% Glycerol.

Shipped at 4°C. Store at -20°C for one year. Avoid repeated freeze/thaw cycles.

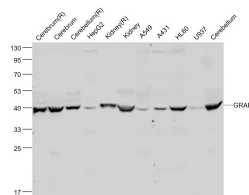
Background: Cellular signaling by G-proteins is down-regulated by GTPase-activating proteins (GAPs), which increase the rate of GTP hydrolysis. The GTPase regulator associated with focal adhesion kinase (GRAF) has GAP activity toward Rho A and Cdc42, but not Rac1. GRAF is ubiquitously expressed with high levels in heart and brain. Expression of GRAF causes clearing of stress fibers and formation of long actin based filopodial-like extensions. Fusion of MLL with GRAF, MLL/GRAF, is included in a rare genetic subgroup of acute myeloid leukemia (AML) cases.

Reactivity: Human, Mouse, Rat
(predicted: Rabbit, Pig,
Sheep, Cow, Chicken, Dog)

Predicted
MW.: 92 kDa

Subcellular Location: Cell membrane ,Cytoplasm

— VALIDATION IMAGES



Sample: Cerebrum(Rat) Lysate at 40 ug
Cerebrum(Mouse) Lysate at 40 ug
Cerebellum(Rat) Lysate at 40 ug HepG2(Human)
Cell Lysate at 30 ug Kidney(Rat) Lysate at 40 ug
Kidney(Mouse) Lysate at 40 ug A549(Human) Cell
Lysate at 30 ug A431(Human) Cell Lysate at 30 ug
HL60(Human) Cell Lysate at 30 ug U937(Human)
Cell Lysate at 30 ug Cerebellum(Mouse) Lysate at
40 ug Primary: Anti-GRAP (bs-11248R) at 1/1000
dilution Secondary: IRDye800CW Goat Anti-
Rabbit IgG at 1/20000 dilution Predicted band
size: 36 kD Observed band size: 38 kD