

bs-11243R**[Primary Antibody]****Rab17 Rabbit pAb****BioSS**
ANTIBODIES

www.bioss.com.cn

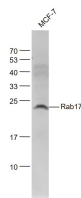
sales@bioss.com.cn

techsupport@bioss.com.cn

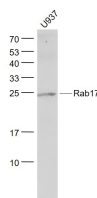
400-901-9800

— DATASHEET —

Host: Rabbit Clonality: Polyclonal GeneID: 64284 Target: Rab17 Immunogen: KLH conjugated synthetic peptide derived from human Rab17: 101-200/212. Purification: affinity purified by Protein A Concentration: 1mg/ml Storage: 0.01M TBS (pH7.4) with 1% BSA, 0.02% Proclin300 and 50% Glycerol. Shipped at 4°C. Store at -20°C for one year. Avoid repeated freeze/thaw cycles. Background: Rab17 belongs to the Rab family of small Ras-like GTPases. It is specifically expressed in epithelial cells and is upregulated during cell polarization. Immunofluorescence staining studies indicate that Rab17 is associated with the perinuclear recycling endosome in nonpolarized epithelial cells and with the apical recycling endosome in polarized epithelial cells. The function of Rab17 remains unclear. Reports of Rab17 colocalization with internalized IgA in the apical endosome suggest that it may regulate receptor-mediated transcytosis. Rab17 has also been shown to regulate melanocytic filopodia formation and melanosome trafficking. siRNA knockdown of Rab17 in melanoma cells induces melanosome accumulation in the cell periphery.	Isotype: IgG SWISS: Q9H0T7	Applications: WB (1:500-2000) Reactivity: Human (predicted: Mouse, Rat, Dog) Predicted MW.: 23 kDa Subcellular Location: Cell membrane ,Cytoplasm
--	---	--

— VALIDATION IMAGES —

Sample: MCF-7(Human) Cell Lysate at 30 ug
 Primary: Anti-Rab17 (bs-11243R) at 1/1000
 dilution Secondary: IRDye800CW Goat Anti-Rabbit IgG at 1/20000 dilution Predicted band size: 23 kD Observed band size: 23 kD



Sample: U937(Human) Cell Lysate at 30 ug
 Primary: Anti-Rab17 (bs-11243R) at 1/1000
 dilution Secondary: IRDye800CW Goat Anti-Rabbit IgG at 1/20000 dilution Predicted band size: 23 kD Observed band size: 23 kD