

bs-6890R

[Primary Antibody]

CXXC5 Rabbit pAb

BioSS
ANTIBODIES

www.bioss.com.cn

sales@bioss.com.cn

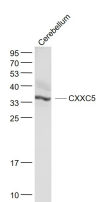
techsupport@bioss.com.cn

400-901-9800

— DATASHEET —

Host: Rabbit	Isotype: IgG	Applications: WB (1:500-2000)
Clonality: Polyclonal		
GeneID: 51523	SWISS: Q7LFL8	
Target: CXXC5		
Immunogen: KLH conjugated synthetic peptide derived from human CXXC5: 251-322/322.		
Purification: affinity purified by Protein A		
Concentration: 1mg/ml		
Storage: 0.01M TBS (pH7.4) with 1% BSA, 0.02% Proclin300 and 50% Glycerol. Shipped at 4°C. Store at -20°C for one year. Avoid repeated freeze/thaw cycles.		Reactivity: Mouse (predicted: Human, Rat, Pig, Sheep, Cow, Chicken, Dog, Horse)
Background: May indirectly participate in activation of the NF-kappa-B and MAPK pathways. Acts as a mediator of BMP4-mediated modulation of canonical Wnt signaling activity in neural stem cells.		Predicted MW.: 24-34 kDa
		Subcellular Location: Cell membrane ,Cytoplasm ,Nucleus

— VALIDATION IMAGES —



Sample: Cerebellum (Mouse) Lysate at 40 ug
Primary: Anti- CXXC5 (bs-6890R) at 1/1000
dilution Secondary: IRDye800CW Goat Anti-
Rabbit IgG at 1/20000 dilution Predicted band
size: 24-34 kD Observed band size: 34 kD

— SELECTED CITATIONS —

- **[IF=4.4]** Shi Mingyue. et al. Effect of LncRNA LOC106505926 on myogenesis and Lipogenesis of porcine primary cells. BMC GENOMICS. 2024 Dec;25(1):1-16 WB ;Fig. 38816813