

**bs-2801R****[ Primary Antibody ]****SMO Rabbit pAb****Bioss**  
**ANTIBODIES**

www.bioss.com.cn

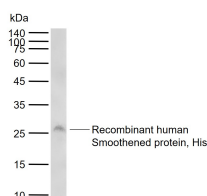
sales@bioss.com.cn

techsupport@bioss.com.cn

400-901-9800

**— DATASHEET —**

<b>Host:</b> Rabbit <b>Clonality:</b> Polyclonal <b>GeneID:</b> 6608 <b>Target:</b> SMO <b>Immunogen:</b> KLH conjugated synthetic peptide derived from human SMO: 551-650/787. <b>Purification:</b> affinity purified by Protein A <b>Concentration:</b> 1mg/ml <b>Storage:</b> 0.01M TBS (pH7.4) with 1% BSA, 0.02% Proclin300 and 50% Glycerol. Shipped at 4°C. Store at -20°C for one year. Avoid repeated freeze/thaw cycles. <b>Background:</b> The protein encoded by this gene is a G protein-coupled receptor that interacts with the patched protein, a receptor for hedgehog proteins. The encoded protein transduces signals to other proteins after activation by a hedgehog protein/patched protein complex. [provided by RefSeq, Jul 2010] Function : G protein-coupled receptor that probably associates with the patched protein (PTCH) to transduce the hedgehog's proteins signal. Binding of sonic hedgehog (SHH) to its receptor patched is thought to prevent normal inhibition by patched of smoothened (SMO). Required for the accumulation of KIF7 and GLI3 in the cilia.	<b>Isotype:</b> IgG <b>SWISS:</b> Q99835	<b>Applications:</b> WB (1:500-2000) <b>Reactivity:</b> Human, Mouse (predicted: Rat, Rabbit, Sheep, Cow, Dog, Horse) <b>Predicted MW.:</b> 84 kDa <b>Subcellular Location:</b> Cell membrane
---	---	---

**— VALIDATION IMAGES —**

Sample: Lane 1: Recombinant human Smoothened protein, His lysates  
Primary: Anti-Smoothened (bs-2801R) at 1/1000 dilution  
Secondary: IRDye800CW Goat Anti-Rabbit IgG at 1/20000 dilution  
Predicted band size: 84 kDa  
Observed band size: 28 kDa

**— SELECTED CITATIONS —**

- **[IF=10.042]** Liu et al. Genetic ablation of Smoothened in pancreatic fibroblasts increases acinar-ductal metaplasia. (2016) Genes.Dev. 30:1943-55 IHC ;Mouse. 27633013
- **[IF=4.56]** Wang, H., et al. "Baicalin Attenuates Alcoholic Liver Injury through Modulation of Hepatic Oxidative Stress, Inflammation and Sonic Hedgehog Pathway in Rats." Cellular Physiology and Biochemistry 39.3 (2016): 1129-1140. WB ;="Rat". 27576501
- **[IF=5.4]** Smith Claire E. L.. et al. Drug and siRNA screens identify ROCK2 as a therapeutic target for ciliopathies. Communications Medicine. 2025 Apr;5(1):1-18 IF ;Mouse. 40253509
- **[IF=4.26]** Zhou et al. GDC-0449 improves the antitumor activity of nano-doxorubicin in pancreatic cancer in a fibroblast-enriched microenvironment. (2017) Sci.Rep. 7:13379 WB ;Human. 29042665

Important Note: This product as supplied is intended for research use only, not for use in human, therapeutic or diagnostic applications.

- **[IF=3.7]** Berrin Ozdil. et al. Modulating Cancer Stem Cell Characteristics in CD133+ Melanoma Cells through Hif1 $\alpha$ , KLF4, and SHH Silencing. ACS OMEGA. 2025;10(16):16804–16814 FC ;Cricetulus griseus. 40321496