

DBX2 Rabbit pAb

Catalog Number: bs-12149R

Target Protein: DBX2

Concentration: 1mg/ml

Form: Liquid

Host: Rabbit

Clonality: Polyclonal

Isotype: IgG

Applications: WB (1:500-2000)

Reactivity: Human, Mouse, Rat (predicted:Pig, Sheep, Chicken, Dog, Horse)

Predicted MW: 37 kDa

Entrez Gene: 440097

Swiss Prot: Q6ZNG2

Source: KLH conjugated synthetic peptide derived from human DBX2: 151-250/339.

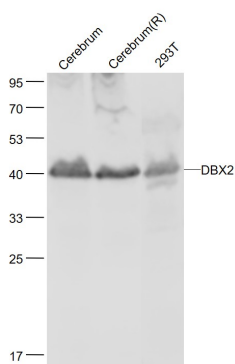
Purification: affinity purified by Protein A

Storage: 0.01M TBS (pH7.4) with 1% BSA, 0.02% Proclin300 and 50% Glycerol.

Shipped at 4°C. Store at -20°C for one year. Avoid repeated freeze/thaw cycles.

Background: Members of the Dbx family are implicated in regionalization of the CNS. Dbx2 is restricted to the ventricular region of the embryonic CNS as well as some of the mesenchymal cells, such as limb buds and tooth germs. BMP regulation of the expression boundaries of the homeobox proteins Dbx2, Pax6 and Msx1 generates precursor populations with distinct developmental potentials.

VALIDATION IMAGES



Sample: Cerebrum(Mouse) Lysate at 40 ug Cerebrum(Rat) Lysate at 40 ug 293T(Human) Cell Lysate at 30 ug
Primary: Anti-DBX2 (bs-12149R) at 1/1000 dilution Secondary: IRDye800CW Goat Anti-Rabbit IgG at 1/20000 dilution
Predicted band size: 37 kD Observed band size: 40 kD