

**bs-6886R**

**[ Primary Antibody ]**

## WDR61 Rabbit pAb

**Bioss**  
ANTIBODIES

www.bioss.com.cn

sales@bioss.com.cn

techsupport@bioss.com.cn

400-901-9800

### — DATASHEET —

**Host:** Rabbit

**Isotype:** IgG

**Clonality:** Polyclonal

**Target:** WDR61

**Immunogen:** KLH conjugated synthetic peptide derived from Human WDR61: 121-220/305.

**Purification:** affinity purified by Protein A

**Concentration:** 1mg/ml

**Storage:** 0.01M TBS (pH7.4) with 1% BSA, 0.02% Proclin300 and 50% Glycerol.  
Shipped at 4°C. Store at -20°C for one year. Avoid repeated freeze/thaw cycles.

**Applications:** IHC-P (1:100-500)

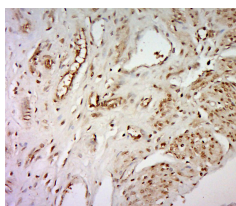
IHC-F (1:100-500)

IF (1:100-500)

**Reactivity:** Rat (predicted: Human, Mouse, Sheep, Cow, Dog, Horse)

**Predicted MW.:** 33 kDa

### — VALIDATION IMAGES —



Paraformaldehyde-fixed, paraffin embedded (rat uterus); Antigen retrieval by boiling in sodium citrate buffer (pH6.0) for 15min; Block endogenous peroxidase by 3% hydrogen peroxide for 20 minutes; Blocking buffer (normal goat serum) at 37°C for 30min; Antibody incubation with (WDR61) Polyclonal Antibody, Unconjugated (bs-6886R) at 1:400 overnight at 4°C, followed by a conjugated secondary (sp-0023) for 20 minutes and DAB staining.