

bs-6892R**[Primary Antibody]****GMCL1L Rabbit pAb****Bioss**
ANTIBODIES

www.bioss.com.cn

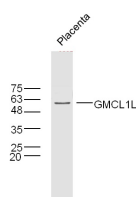
sales@bioss.com.cn

techsupport@bioss.com.cn

400-901-9800

— DATASHEET —

Host: Rabbit	Isotype: IgG	Applications: WB (1:500-2000)
Clonality: Polyclonal		
GeneID: 64396	SWISS: Q8NEA9	
Target: GMCL1L		
Immunogen: KLH conjugated synthetic peptide derived from human GMCL1L: 351-450/526.		
Purification: affinity purified by Protein A		Reactivity: Mouse (predicted: Human, Rat, Pig, Sheep, Cow, Dog, Horse)
Concentration: 1mg/ml		
Storage: 0.01M TBS (pH7.4) with 1% BSA, 0.02% Proclin300 and 50% Glycerol. Shipped at 4°C. Store at -20°C for one year. Avoid repeated freeze/thaw cycles.		
Background: GMCL1L has a possible function in spermatogenesis. It enhances the degradation of MDM2 and increases the amount of p53 probably by modulating the nucleocytoplasmic transport. GMCL1L is also a probable substrate-specific adapter of an E3 ubiquitin-protein ligase complex which mediates the ubiquitination and subsequent proteasomal degradation of target proteins.		
		Predicted MW.: 60 kDa
		Subcellular Location: Nucleus

— VALIDATION IMAGES —

Sample: Placenta (Mouse) Lysate at 40 ug
Primary: Anti-GMCL1L (bs-6892R) at 1/300
dilution Secondary: IRDye800CW Goat Anti-
Rabbit IgG at 1/20000 dilution Predicted band
size: 60 kD Observed band size: 60 kD