

bs-2378R**[Primary Antibody]****BioSS**
ANTIBODIES

www.bioss.com.cn

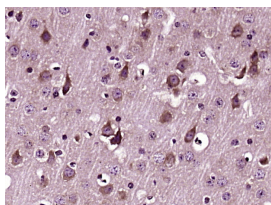
sales@bioss.com.cn

techsupport@bioss.com.cn

400-901-9800

Notch 2 Rabbit pAb**— DATASHEET —**

Host: Rabbit	Isotype: IgG	Applications: IHC-P (1:100-500)
Clonality: Polyclonal		IHC-F (1:100-500)
GeneID: 4853	SWISS: Q04721	IF (1:100-500)
Target: Notch 2		Reactivity: Mouse (predicted: Human, Rat, Rabbit, Pig)
Immunogen: KLH conjugated synthetic peptide derived from human Notch2: 1501-1700/2471. < Extracellular >		
Purification: affinity purified by Protein A		Predicted MW.: 262 kDa
Concentration: 1mg/ml		Subcellular Location: Cell membrane ,Nucleus
Storage: 0.01M TBS (pH7.4) with 1% BSA, 0.02% Proclin300 and 50% Glycerol. Shipped at 4°C. Store at -20°C for one year. Avoid repeated freeze/thaw cycles.		
Background: Functions as a receptor for membrane-bound ligands Jagged1, Jagged2 and Delta1 to regulate cell-fate determination. Upon ligand activation through the released notch intracellular domain (NICD) it forms a transcriptional activator complex with RBPJ/RBPSUH and activates genes of the enhancer of split locus. Affects the implementation of differentiation, proliferation and apoptotic programs.		

— VALIDATION IMAGES —

Paraformaldehyde-fixed, paraffin embedded (Mouse brain); Antigen retrieval by boiling in sodium citrate buffer (pH6.0) for 15min; Block endogenous peroxidase by 3% hydrogen peroxide for 20 minutes; Blocking buffer (normal goat serum) at 37°C for 30min; Antibody incubation with (Notch 2) Polyclonal Antibody, Unconjugated (bs-2378R) at 1:400 overnight at 4°C, followed by a conjugated secondary antibody (sp-0023) for 20 minutes and DAB staining.

— SELECTED CITATIONS —

- **[IF=3.8]** Moxixuan Liu. et al. Luteolin improves mitochondrial dynamics and function in ulcerative colitis via the miR-195-5p/Notch signalling pathway. J FUNCT FOODS. 2025 Jan;124:106644 IHC ;Mouse. 10.1016/j.jff.2024.106644
- **[IF=3.342]** Ying-Hui Zhou. et al. Notch1 is a marker for in situ resting osteocytes in a 3-dimensional gel culture model. CONNECT TISSUE RES. 2023 May 25 IHC,WB ;Mouse. 37227119
- **[IF=1.984]** Zhan J et al. In Vivo Study on the Effects of Xiaoaiping on the Stemness of Hepatocellular Carcinoma Cells. Evid Based Complement Alternat Med. 2019 Jun 23;2019:4738243. WB ;Human. 31341493

Important Note: This product as supplied is intended for research use only, not for use in human, therapeutic or diagnostic applications.