

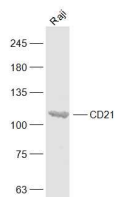
bs-3792R**[Primary Antibody]****CR2 Rabbit pAb****Bioss**
ANTIBODIES

www.bioss.com.cn

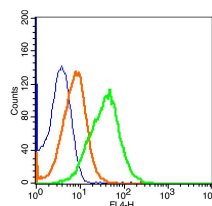
sales@bioss.com.cn

techsupport@bioss.com.cn

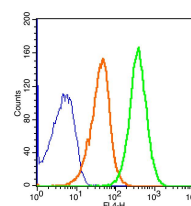
400-901-9800

— DATASHEET —**Host:** Rabbit**Isotype:** IgG**Clonality:** Polyclonal**GeneID:** 1380**SWISS:** P20023**Target:** CR2**Immunogen:** KLH conjugated synthetic peptide derived from human CR2: 981-1092/1092. < Cytoplasmic >**Purification:** affinity purified by Protein A**Concentration:** 1mg/ml**Storage:** 0.01M TBS (pH7.4) with 1% BSA, 0.02% Proclin300 and 50% Glycerol.
Shipped at 4°C. Store at -20°C for one year. Avoid repeated freeze/thaw cycles.**Background:** This gene encodes a membrane protein, which functions as a receptor for Epstein-Barr virus (EBV) binding on B and T lymphocytes. Genetic variations in this gene are associated with susceptibility to systemic lupus erythematosus type 9 (SLEB9). Alternatively spliced transcript variants encoding different isoforms have been found for this gene.[provided by RefSeq, Sep 2009]**Applications:** **WB** (1:500-2000)
Flow-Cyt (1µg/Test)**Reactivity:** Human, Rat
(predicted: Mouse)**Predicted MW.:** 111 kDa**Subcellular Location:** Cytoplasm ,Nucleus**— VALIDATION IMAGES —**

Sample: Raji(Human) Cell Lysate at 30 ug
 Primary: Anti-CD21 (bs-3792R) at 1/1000 dilution
 Secondary: IRDye800CW Goat Anti-Rabbit IgG at 1/20000 dilution Predicted band size: 111 kD
 Observed band size: 111 kD



Blank control(blue): U-87MG Cells(fixed with 2% paraformaldehyde (10 min)). Primary Antibody: Rabbit Anti-CD21/AF647 Conjugated antibody (bs-3792R/AF647), Dilution: 1µg in 100 µL 1X PBS containing 0.5% BSA; Isotype Control Antibody: Rabbit IgG/AF647(orange), used under the same conditions.



Blank control(blue): Molt-4 Cells(fixed with 2% paraformaldehyde (10 min)). Primary Antibody: Rabbit Anti-CD21/AF647 Conjugated antibody (bs-3792R/AF647), Dilution: 1µg in 100 µL 1X PBS containing 0.5% BSA; Isotype Control Antibody: Rabbit IgG/AF647(orange), used under the same conditions.