

bs-18372R**[Primary Antibody]****LRRC26 Rabbit pAb****BioSS**
ANTIBODIES

www.bioss.com.cn

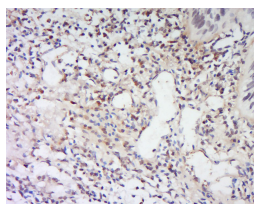
sales@bioss.com.cn

techsupport@bioss.com.cn

400-901-9800

— DATASHEET —

Host: Rabbit	Isotype: IgG	Applications: IHC-P (1:100-500) IHC-F (1:100-500) IF (1:100-500) Reactivity: Human Predicted MW.: 32 kDa Subcellular Location: Cell membrane ,Cytoplasm
Clonality: Polyclonal		
GeneID: 389816	SWISS: Q2I0M4	
Target: LRRC26		
Immunogen: KLH conjugated synthetic peptide derived from human LRRC26: 201-300/334. < Extracellular >		
Purification: affinity purified by Protein A		
Concentration: 1mg/ml		
Storage: 0.01M TBS (pH7.4) with 1% BSA, 0.02% Proclin300 and 50% Glycerol. Shipped at 4°C. Store at -20°C for one year. Avoid repeated freeze/thaw cycles.		
Background: LRRC26 is a 334 amino acid protein that localizes to the cytoplasm and contains six LRR repeats. Expressed at high levels in normal colon, pancreas, prostate, salivary gland and intestine, LRRC26 is also present in several cancer cell lines, including colon cancer and pancreatic cancer, suggesting an important role in carcinogenesis.		

— VALIDATION IMAGES —

Tissue/cell: human larynx carcinoma; 4% Paraformaldehyde-fixed and paraffin-embedded; Antigen retrieval: citrate buffer (0.01M, pH 6.0), Boiling bathing for 15min; Block endogenous peroxidase by 3% Hydrogen peroxide for 30min; Blocking buffer (normal goat serum, C-0005) at 37°C for 20 min; Incubation: Anti-LRRC26 Polyclonal Antibody, Unconjugated(bs-18372R) 1:200, overnight at 4°C, followed by conjugation to the secondary antibody(SP-0023) and DAB(C-0010) staining