

bs-18358R**[Primary Antibody]**

www.bioss.com.cn

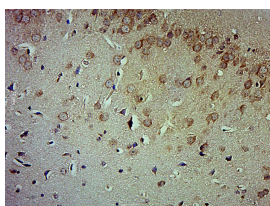
sales@bioss.com.cn

techsupport@bioss.com.cn

400-901-9800

LRIT1 Rabbit pAb**— DATASHEET —**

Host: Rabbit	Isotype: IgG	Applications: IHC-P (1:100-500) IHC-F (1:100-500) IF (1:100-500)
Clonality: Polyclonal		
GeneID: 26103	SWISS: Q9P2V4	
Target: LRIT1		Reactivity: Mouse (predicted: Human, Rat, Cow, Horse)
Immunogen: KLH conjugated synthetic peptide derived from human LRIT1: 251-350/623.		
Purification: affinity purified by Protein A		Predicted MW.: 66 kDa
Concentration: 1mg/ml		Subcellular Location: Cytoplasm
Storage: 0.01M TBS (pH7.4) with 1% BSA, 0.02% Proclin300 and 50% Glycerol. Shipped at 4°C. Store at -20°C for one year. Avoid repeated freeze/thaw cycles.		
Background: The leucine-rich (LRR) repeat is a 20-30 amino acid motif that forms a hydrophobic α/β horseshoe fold, allowing it to accommodate several leucine residues within a tightly packed core. All LRR repeats contain a variable segment and a highly conserved segment, the latter of which accounts for 11 or 12 residues of the entire LRR motif. The primary function of these motifs is to provide a versatile structural framework to mediate the formation of protein-protein interactions. LRRs are present in a variety of proteins with diverse structure and function, including innate immunity and nervous system development. Several human diseases are associated with mutations in genes encoding LRR-containing proteins. The leucine-rich repeat-containing protein 21 (LRRC21), also designated leucine-rich repeat, immunoglobulin-like domain and transmembrane domain-containing protein 1 (LRIT1) or PAL, is a 623 amino acid protein that contains 6 LRR repeats. LRRC21 is expressed in retina and may play a role in phototransduction.		

— VALIDATION IMAGES —

Paraformaldehyde-fixed, paraffin embedded (Mouse brain); Antigen retrieval by boiling in sodium citrate buffer (pH6.0) for 15min; Block endogenous peroxidase by 3% hydrogen peroxide for 20 minutes; Blocking buffer (normal goat serum) at 37°C for 30min; Antibody incubation with (LRIT1) Polyclonal Antibody, Unconjugated (bs-18358R) at 1:500 overnight at 4°C, followed by a conjugated secondary (sp-0023) for 20 minutes and DAB staining.