

bs-18355R**[Primary Antibody]****LRBA Rabbit pAb****Bioss**
ANTIBODIES

www.bioss.com.cn

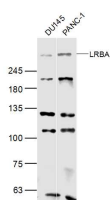
sales@bioss.com.cn

techsupport@bioss.com.cn

400-901-9800

— DATASHEET —

Host: Rabbit	Isotype: IgG	Applications: WB (1:500-2000)
Clonality: Polyclonal		Reactivity: Human (predicted: Mouse, Sheep, Cow, Dog, Horse)
GeneID: 987	SWISS: P50851	
Target: LRBA		
Immunogen: KLH conjugated synthetic peptide derived from human LRBA: 2001-2143/2143.		Predicted MW.: 319 kDa
Purification: affinity purified by Protein A		Subcellular Location: Cell membrane
Concentration: 1mg/ml		
Storage: 0.01M TBS (pH7.4) with 1% BSA, 0.02% Proclin300 and 50% Glycerol. Shipped at 4°C. Store at -20°C for one year. Avoid repeated freeze/thaw cycles.		
Background: The protein encoded by this gene is a member of the WDL-BEACH-WD (WBW) gene family. Its expression is induced in B cells and macrophages by bacterial lipopolysaccharides (LPS). The encoded protein associates with protein kinase A and may be involved in leading intracellular vesicles to activated receptor complexes, which aids in the secretion and/or membrane deposition of immune effector molecules. Defects in this gene are associated with the disorder common variable immunodeficiency-8 with autoimmunity. Two transcript variants encoding different isoforms have been found for this gene. [provided by RefSeq, Dec 2012]		

— VALIDATION IMAGES —

Sample: DU145(Human) Cell Lysate at 40 ug
PANC-1(Human) Cell Lysate at 40 ug Primary:
Anti-LRBA (bs-18355R) at 1/300 dilution
Secondary: IRDye800CW Goat Anti-Rabbit IgG at
1/20000 dilution Predicted band size: 319 kD
Observed band size: 319 kD