

**bsm-33382M****[ Primary Antibody ]**

## Collagen II Mouse mAb

**Bioss**  
ANTIBODIES

www.bioss.com.cn

sales@bioss.com.cn

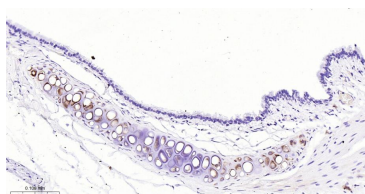
techsupport@bioss.com.cn

400-901-9800

### — DATASHEET —

<b>Host:</b> Mouse	<b>Isotype:</b> IgG	<b>Applications:</b> IHC-P (1:100-500) IHC-F (1:100-500) IF (1:100-500)  <b>Reactivity:</b> Rat (predicted: Mouse)   <b>Predicted MW.:</b> 142 kDa  <b>Subcellular Location:</b> Secreted ,Extracellular matrix
<b>Clonality:</b> Monoclonal	<b>CloneNo.:</b> 3G6	
<b>GeneID:</b> 1280	<b>SWISS:</b> P02458	
<b>Target:</b> Collagen II		
<b>Purification:</b> affinity purified by Protein G		
<b>Concentration:</b> 1mg/ml		
<b>Storage:</b> 0.01M TBS (pH7.4) with 1% BSA, 0.02% Proclin300 and 50% Glycerol. Shipped at 4°C. Store at -20°C for one year. Avoid repeated freeze/thaw cycles.		
<b>Background:</b> This gene encodes the alpha-1 chain of type II collagen, a fibrillar collagen found in cartilage and the vitreous humor of the eye. Mutations in this gene are associated with achondrogenesis, chondrodysplasia, early onset familial osteoarthritis, SED congenita, Langer-Saldino achondrogenesis, Kniest dysplasia, Stickler syndrome type I, and spondyloepimetaphyseal dysplasia Strudwick type. In addition, defects in processing chondrocalcin, a calcium binding protein that is the C-propeptide of this collagen molecule, are also associated with chondrodysplasia. There are two transcripts identified for this gene. [provided by RefSeq, Jul 2008]		

### — VALIDATION IMAGES —



Paraformaldehyde-fixed, paraffin embedded Rat cartilage; Antigen retrieval by boiling in sodium citrate buffer (pH6.0) for 15 min; The section was incubated with Collagen II Monoclonal Antibody, Unconjugated (bsm-33382M) at 1:200 overnight at 4°C, followed by conjugation to the bs-40296G-HRP and DAB (C-0010) staining.