

---

## Collagen I Mouse mAb

Catalog Number: bsm-33401M

Target Protein: Collagen I

Concentration: 1mg/ml

Form: Size : 50ul/100ul/200ul

Liquid

Size : 200ug (PBS only)

Lyophilized

Note: Centrifuge tubes before opening. Reconstitute the lyophilized product in distilled water. Optimal concentration should be determined by the end user.

Host: Mouse

Clonality: Monoclonal

Clone No.: 3C2

Isotype: IgG

Applications: IHC-P (1:100-500), IHC-F (1:100-500), IF (1:100-500)

Reactivity: Human

Predicted MW: 139 kDa

Entrez Gene: 1277

Swiss Prot: P02452

Purification: affinity purified by Protein G

Storage: Size : 50ul/100ul/200ul

0.01M TBS (pH7.4) with 1% BSA, 0.02% Proclin300 and 50% Glycerol.

Size : 200ug (PBS only)

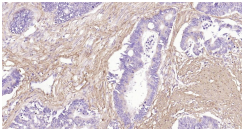
0.01M PBS

Shipped at 4°C. Store at -20°C for one year. Avoid repeated freeze/thaw cycles.

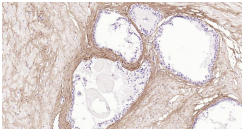
**Background:** Collagens are highly conserved throughout evolution and are characterised by an uninterrupted "Glycine X Y" triplet repeat that is a necessary part of the triple helical structure. Type I collagen (95 kDa) is found in bone, cornea, skin and tendon. Mutations in the encoding gene are associated with osteogenesis imperfecta, Ehlers Danlos syndrome, and idiopathic osteoporosis. Reciprocal translocations between chromosomes 17 and 22, where this gene and the gene for Platelet-derived growth factor beta are located, are associated with a particular type of skin tumor called dermatofibrosarcoma protuberans, resulting from unregulated expression of the growth factor.

## VALIDATION IMAGES

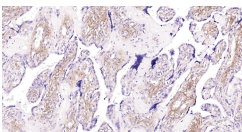
---



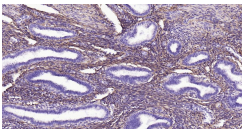
Paraformaldehyde-fixed, paraffin embedded Human Colon Cancer; Antigen retrieval by boiling in sodium citrate buffer (pH6.0) for 15 min; Antibody incubation with Collagen I Monoclonal Antibody, Unconjugated(bsm-33401M) at 1:200 overnight at 4°C, followed by conjugation to the SP Kit (Mouse, sp-0024)and DAB (C-0010) staining.



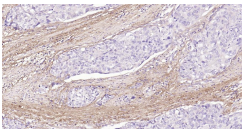
Paraformaldehyde-fixed, paraffin embedded Human Prostate; Antigen retrieval by boiling in sodium citrate buffer (pH6.0) for 15 min; Antibody incubation with Collagen I Monoclonal Antibody, Unconjugated(bsm-33401M) at 1:200 overnight at 4°C, followed by conjugation to the SP Kit (Mouse, sp-0024)and DAB (C-0010) staining.



Paraformaldehyde-fixed, paraffin embedded Human Placenta; Antigen retrieval by boiling in sodium citrate buffer (pH6.0) for 15 min; Antibody incubation with Collagen I Monoclonal Antibody, Unconjugated(bsm-33401M) at 1:200 overnight at 4°C, followed by conjugation to the SP Kit (Mouse, sp-0024)and DAB (C-0010) staining.



Paraformaldehyde-fixed, paraffin embedded Human Uterus; Antigen retrieval by boiling in sodium citrate buffer (pH6.0) for 15 min; Antibody incubation with Collagen I Monoclonal Antibody, Unconjugated(bsm-33401M) at 1:200 overnight at 4°C, followed by conjugation to the SP Kit (Mouse, sp-0024)and DAB (C-0010) staining.



Paraformaldehyde-fixed, paraffin embedded Human Esophageal Cancer; Antigen retrieval by boiling in sodium citrate buffer (pH6.0) for 15 min; Antibody incubation with Collagen I Monoclonal Antibody, Unconjugated(bsm-33401M) at 1:200 overnight at 4°C, followed by conjugation to the SP Kit (Mouse, sp-0024)and DAB (C-0010) staining.