

bs-12425R**[Primary Antibody]****CSNK1G2 Rabbit pAb****BioSS**
ANTIBODIES

www.bioss.com.cn

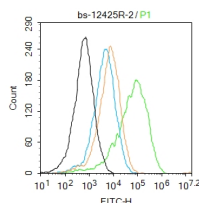
sales@bioss.com.cn

techsupport@bioss.com.cn

400-901-9800

DATASHEET

Host: Rabbit	Isotype: IgG	Applications: Flow-Cyt (2ug/Test)
Clonality: Polyclonal		Reactivity: Mouse (predicted: Human, Rat, Pig, Cow, Dog, Horse)
GeneID: 1455	SWISS: P78368	
Target: CSNK1G2		Predicted MW.: 47 kDa
Immunogen: KLH conjugated synthetic peptide derived from human CK1g2/Casein Kinase 1 gamma 2: 201-300/415.		Subcellular Location: Cytoplasm
Purification: affinity purified by Protein A		
Concentration: 1mg/ml		
Storage: 0.01M TBS (pH7.4) with 1% BSA, 0.02% Proclin300 and 50% Glycerol. Shipped at 4°C. Store at -20°C for one year. Avoid repeated freeze/thaw cycles.		
Background: Enables protein serine/threonine kinase activity. Involved in peptidyl-serine phosphorylation. Located in membrane. [provided by Alliance of Genome Resources, Apr 2022]		

VALIDATION IMAGES

Blank control: Mouse kidney. Primary Antibody (green line): Rabbit Anti-Casein kinase 1 gamma 2 antibody (bs-12425R) Dilution: 2µg/10⁶ cells; Isotype Control Antibody (orange line): Rabbit IgG. Secondary Antibody: Goat anti-rabbit IgG-AF488 Dilution: 1µg/test. Protocol The cells were fixed with 4% PFA (10min at room temperature) and then permeabilized with 0.1% PBST for 20 min at room temperature. The cells were then incubated in 5% BSA to block non-specific protein-protein interactions for 30 min at room temperature. Cells stained with Primary Antibody for 30 min at room temperature. The secondary antibody used for 40 min at room temperature. Acquisition of 20,000 events was performed.