

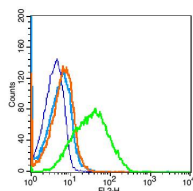
**bs-4961R****[ Primary Antibody ]****CD1d Rabbit pAb****BioSS**  
ANTIBODIES

www.bioss.com.cn

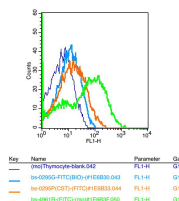
sales@bioss.com.cn

techsupport@bioss.com.cn

400-901-9800

**DATASHEET****Host:** Rabbit**Isotype:** IgG**Clonality:** Polyclonal**Target:** CD1d**Immunogen:** KLH conjugated synthetic peptide derived from mouse CD1d: 165-270/336. < Extracellular >**Purification:** affinity purified by Protein A**Concentration:** 1mg/ml**Storage:** 0.01M TBS (pH7.4) with 1% BSA, 0.02% Proclin300 and 50% Glycerol.  
Shipped at 4°C. Store at -20°C for one year. Avoid repeated freeze/thaw cycles.**Background:** This gene encodes a divergent member of the CD1 family of transmembrane glycoproteins, which are structurally related to the major histocompatibility complex (MHC) proteins and form heterodimers with beta-2-microglobulin. The CD1 proteins mediate the presentation of primarily lipid and glycolipid antigens of self or microbial origin to T cells. The human genome contains five CD1 family genes organized in a cluster on chromosome 1. The CD1 family members are thought to differ in their cellular localization and specificity for particular lipid ligands. The protein encoded by this gene localizes to late endosomes and lysosomes via a tyrosine-based motif in the cytoplasmic tail. Two transcript variants encoding different isoforms have been found for this gene. [provided by RefSeq, Jan 2016]**Applications:** Flow-Cyt (1µg/Test)**Reactivity:** Mouse (predicted: Rat)**Predicted MW.:** 36 kDa**Subcellular Location:** Extracellular matrix ,Cell membrane ,Cytoplasm**VALIDATION IMAGES**

Blank control(mouse):mouse spleen cells (fixed with 2% paraformaldehyde (10 min), then permeabilized with 90% ice-cold methanol for 30 min on ice). Primary Antibody: Rabbit Anti-CD1d antibody(bs-4961R), Dilution: 1µg in 100 µL 1X PBS containing 0.5% BSA; Isotype Control Antibody: Rabbit IgG(orange), used under the same conditions; Secondary Antibody: Goat anti-rabbit IgG-PE(white blue), Dilution: 1:200 in 1 X PBS containing 0.5% BSA.



Positive control: mouse thymocyte(2% Paraformaldehyde-fixed ) Isotype Control Antibody: Rabbit IgG; Dilution: 1µg in 100 µL 1 X PBS containing 0.5% BSA Secondary Antibody: Goat anti-rabbit IgG-FITC; Dilution: 1:200 in 1 X PBS containing 0.5% BSA Primary Antibody: Rabbit Anti-CD1d antibody (bs-4961R); Dilution: 1µg in 100 µL 1X PBS containing 0.5% BSA