

---

## TACI Rabbit pAb

Catalog Number: bs-4841R

Target Protein: TACI

Concentration: 1mg/ml

Form: Liquid

Host: Rabbit

Clonality: Polyclonal

Isotype: IgG

Applications: WB (1:500-2000)

Reactivity: Mouse (predicted:Human)

Predicted MW: 32 kDa

Entrez Gene: 23495

Swiss Prot: O14836

Source: KLH conjugated synthetic peptide derived from human TNFRSF13B/CD267/TACI :  
21-120/293.

Purification: affinity purified by Protein A

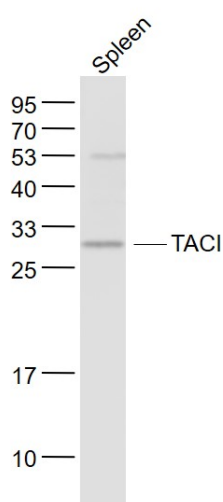
Storage: 0.01M TBS (pH7.4) with 1% BSA, 0.02% Proclin300 and 50% Glycerol.

Shipped at 4°C. Store at -20°C for one year. Avoid repeated freeze/thaw cycles.

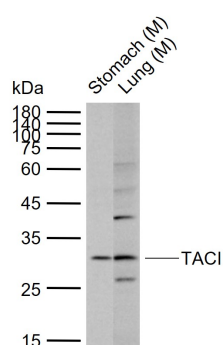
**Background:** The protein encoded by this gene is a lymphocyte-specific member of the tumor necrosis factor (TNF) receptor superfamily. It interacts with calcium-modulator and cyclophilin ligand (CAML). The protein induces activation of the transcription factors NFAT, AP1, and NF-kappa-B and plays a crucial role in humoral immunity by interacting with a TNF ligand. This gene is located within the Smith-Magenis syndrome region on chromosome 17. [provided by RefSeq, Jul 2008]

### VALIDATION IMAGES

---



Sample: Spleen (Mouse) Lysate at 40 ug Primary: Anti- TACI (bs-4841R) at 1/1000 dilution Secondary: IRDye800CW Goat Anti-Rabbit IgG at 1/20000 dilution Predicted band size: 32 kD Observed band size: 30 kD



Sample: Lane 1: Mouse Stomach tissue lysates Lane 2: Mouse Lung tissue lysates Primary: Anti-TACI (bs-4841R) at 1/1000 dilution Secondary: IRDye800CW Goat Anti-Rabbit IgG at 1/20000 dilution Predicted band size: 32 kDa Observed band size: 30 kDa

## PRODUCT SPECIFIC PUBLICATIONS

[IF=4.8] Sen Luo. et al. Three-gene signature revealing the dynamics of lymphocyte infiltration in subchondral bone during osteoarthritis progression. INT IMMUNOPHARMACOL. 2024 Aug;137:112431 WB,IF ; Human . 38897125