

bs-4893R**[Primary Antibody]****Bioss**
ANTIBODIES

www.bioss.com.cn

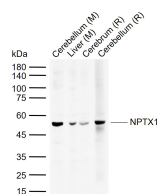
sales@bioss.com.cn

techsupport@bioss.com.cn

400-901-9800

NPTX1 Rabbit pAb**— DATASHEET —**

Host: Rabbit Clonality: Polyclonal GeneID: 4884 Target: NPTX1 Immunogen: KLH conjugated synthetic peptide derived from human NPTX1: 201-300/432. Purification: affinity purified by Protein A Concentration: 1mg/ml Storage: 0.01M TBS (pH7.4) with 1% BSA, 0.02% Proclin300 and 50% Glycerol. Shipped at 4°C. Store at -20°C for one year. Avoid repeated freeze/thaw cycles. Background: NPTX1 is a member of the neuronal pentraxin gene family. Neuronal pentraxin 1 is similar to the rat NP1 gene which encodes a binding protein for the snake venom toxin taipoxin. Human NPTX1 mRNA is exclusively localized to the nervous system. [provided by RefSeq, Jul 2008]	Isotype: IgG SWISS: Q15818	Applications: WB (1:500-2000) Reactivity: Mouse, Rat (predicted: Human, Rabbit, Pig, Cow, Chicken, Dog, Horse) Predicted MW.: 45 kDa Subcellular Location: Cytoplasm
---	---	--

— VALIDATION IMAGES —

Sample: Lane 1: Mouse Cerebellum tissue lysates
Lane 2: Mouse Liver tissue lysates Lane 3: Rat Cerebrum tissue lysates Lane 4: Rat Cerebellum tissue lysates
Primary: Anti-NPTX1 (bs-4893R) at 1/1000 dilution Secondary: IRDye800CW Goat Anti-Rabbit IgG at 1/20000 dilution
Predicted band size: 45 kDa Observed band size: 52 kDa

— SELECTED CITATIONS —

- **[IF=2.967]** Jing Wu. et al. NPTX1 inhibits pancreatic cancer cell proliferation and migration and enhances chemotherapy sensitivity by targeting RBM10. Oncol Lett. 2022 May;23(5):1-9 WB ;Human. 10.3892/ol.2022.13275