

bs-4855R**[Primary Antibody]****GLUT1 Rabbit pAb****Bioss**
ANTIBODIES

www.bioss.com.cn

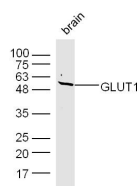
sales@bioss.com.cn

techsupport@bioss.com.cn

400-901-9800

— DATASHEET —

Host: Rabbit	Isotype: IgG	Applications: WB (1:500-2000)
Clonality: Polyclonal		Reactivity: Mouse (predicted: Human, Rat, Rabbit, Pig, Sheep, Cow, Chicken, Dog, GuineaPig)
GeneID: 6513	SWISS: P11166	Predicted MW.: 54 kDa
Target: GLUT1		Subcellular Location: Extracellular matrix ,Cell membrane
Immunogen: KLH conjugated synthetic peptide derived from human GLUT1: 251-320/492 human. < Extracellular >		
Purification: affinity purified by Protein A		
Concentration: 1mg/ml		
Storage: 0.01M TBS (pH7.4) with 1% BSA, 0.02% Proclin300 and 50% Glycerol. Shipped at 4°C. Store at -20°C for one year. Avoid repeated freeze/thaw cycles.		
Background: This gene encodes a major glucose transporter in the mammalian blood-brain barrier. Mutations in this gene have been found in a family with paroxysmal exertion-induced dyskinesia. [provided by RefSeq, Jul 2008].		

— VALIDATION IMAGES —

Sample: Brain (Mouse) Lysate at 40 ug Primary:

Anti-GLUT1 (bs-4855R) at 1/300 dilution

Secondary: IRDye800CW Goat Anti-Rabbit IgG at

1/20000 dilution Predicted band size: 54 kD

Observed band size: 54 kD

— SELECTED CITATIONS —

- **[IF=17.1]** Lei Liu. et al. Myricetin Oligomer Triggers Multi-Receptor Mediated Penetration and Autophagic Restoration of Blood-Brain Barrier for Ischemic Stroke Treatment. ACS NANO. 2024;XXXX(XXX):XXX-XXX WB ;Mouse. 38533773
- **[IF=3.8]** Yaling Wu. et al.PFKFB4 promotes endometrial cancer by regulating glycolysis through SRC-3 phosphorylation..ONCOLOGY REPORTS.2025 May;53(5):53. Western blot ;Human. 40116122
- **[IF=2.4]** Zhao Xuan. et al. CircSFMBT2 Plays an Oncogenic Role in Lung Adenocarcinoma Depending on the miR-1305/SALL4 Axis. BIOCHEM GENET. 2023 Dec;;1-19 WB ;Human. 38127171