

bs-14224R**[Primary Antibody]****DDX28 Rabbit pAb****BioSS**
ANTIBODIES

www.bioss.com.cn

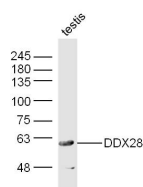
sales@bioss.com.cn

techsupport@bioss.com.cn

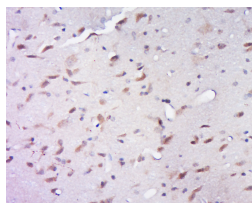
400-901-9800

— DATASHEET —

Host: Rabbit Clonality: Polyclonal GeneID: 55794 Target: DDX28 Immunogen: KLH conjugated synthetic peptide derived from human DDX28: 451-540/540. Purification: affinity purified by Protein A Concentration: 1mg/ml Storage: 0.01M TBS (pH7.4) with 1% BSA, 0.02% Proclin300 and 50% Glycerol. Shipped at 4°C. Store at -20°C for one year. Avoid repeated freeze/thaw cycles. Background: DEAD box proteins, characterized by the conserved motif Asp-Glu-Ala-Asp (DEAD), are putative RNA helicases. They are implicated in a number of cellular processes involving alteration of RNA secondary structure, such as translation initiation, nuclear and mitochondrial splicing, and ribosome and spliceosome assembly. Based on their distribution patterns, some members of the DEAD box protein family are believed to be involved in embryogenesis, spermatogenesis, and cellular growth and division. This gene is intronless. It encodes an RNA-dependent ATPase. The encoded protein is localized in the mitochondria and the nucleus, and can be transported between the mitochondria and the nucleus. [provided by RefSeq, Jul 2008]	Isotype: IgG SWISS: Q9NUL7	Applications: WB (1:500-2000) IHC-P (1:100-500) IHC-F (1:100-500) IF (1:100-500) Reactivity: Mouse, Rat (predicted: Human, Rabbit, Sheep, Cow, Dog) Predicted MW.: 60 kDa Subcellular Location: Nucleus
---	---	--

— VALIDATION IMAGES —

Sample: testis (Mouse) Lysate at 40 ug Primary:
Anti-DDX28(bs-14224R) at 1/300 dilution
Secondary: IRDye800CW Goat Anti-Rabbit IgG at
1/20000 dilution Predicted band size: 60 kD
Observed band size: 60 kD



Tissue/cell: Rat brain tissue; 4%
Paraformaldehyde-fixed and paraffin-
embedded; Antigen retrieval: citrate buffer (
0.01M, pH 6.0), Boiling bathing for 15min; Block
endogenous peroxidase by 3% Hydrogen
peroxide for 30min; Blocking buffer (normal goat
serum,C-0005) at 37°C for 20 min; Incubation:
Anti-DDX28 Polyclonal Antibody,
Unconjugated(bs-14224R) 1:500, overnight at
4°C, followed by conjugation to the secondary
antibody(SP-0023) and DAB(C-0010) staining