

**bs-14717R****[ Primary Antibody ]****DDX19A Rabbit pAb****Bioss**  
**ANTIBODIES**

www.bioss.com.cn

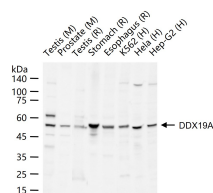
sales@bioss.com.cn

techsupport@bioss.com.cn

400-901-9800

**— DATASHEET —**

<b>Host:</b> Rabbit	<b>Isotype:</b> IgG	<b>Applications:</b> WB (1:500-2000)
<b>Clonality:</b> Polyclonal		<b>Reactivity:</b> Human, Mouse, Rat (predicted: Hamster)
<b>GeneID:</b> 55308	<b>SWISS:</b> Q9NUU7	
<b>Target:</b> DDX19A		<b>Predicted MW.:</b> 54 kDa
<b>Immunogen:</b> KLH conjugated synthetic peptide derived from human DDX19A: 201-300/478.		<b>Subcellular Location:</b> Cytoplasm ,Nucleus
<b>Purification:</b> affinity purified by Protein A		
<b>Concentration:</b> 1mg/ml		
<b>Storage:</b> 0.01M TBS (pH7.4) with 1% BSA, 0.02% Proclin300 and 50% Glycerol. Shipped at 4°C. Store at -20°C for one year. Avoid repeated freeze/thaw cycles.		
<b>Background:</b> ATP-dependent RNA helicase involved in mRNA export from the nucleus. Subcellular Location : Cytoplasm. Nucleus > nuclear pore complex. Nucleus membrane. Nuclear pore complex cytoplasmic fibrils.		

**— VALIDATION IMAGES —**

25 ug total protein per lane of various lysates (see on figure) probed with DDX19A polyclonal antibody, unconjugated (bs-14717R) at 1:1000 dilution and 4°C overnight incubation. Followed by conjugated secondary antibody incubation at r.t. for 60 min.