

bs-20047R**[Primary Antibody]****ELMO2 Rabbit pAb****Bioss**
ANTIBODIES

www.bioss.com.cn

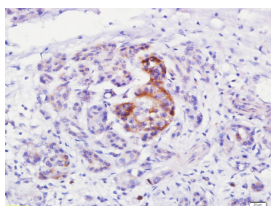
sales@bioss.com.cn

techsupport@bioss.com.cn

400-901-9800

— DATASHEET —

Host: Rabbit	Isotype: IgG	Applications: IHC-P (1:100-500) IHC-F (1:100-500) IF (1:100-500)
Clonality: Polyclonal		
GeneID: 63916	SWISS: Q96JJ3	
Target: ELMO2		Reactivity: Human (predicted: Mouse, Rat, Rabbit, Pig, Cow, Horse)
Immunogen: KLH conjugated synthetic peptide derived from human ELMO2: 101-200/720.		
Purification: affinity purified by Protein A		Predicted MW.: 83 kDa
Concentration: 1mg/ml		Subcellular Location: Cell membrane ,Cytoplasm
Storage: 0.01M TBS (pH7.4) with 1% BSA, 0.02% Proclin300 and 50% Glycerol. Shipped at 4°C. Store at -20°C for one year. Avoid repeated freeze/thaw cycles.		
Background: Elmo (engulfment and cell motility) proteins share similarity to C. elegans CED-12. The C. elegans genes ced-2, ced-5, ced-10, and ced-12 and their mammalian homologs CRKII, DOCK1, RAC1 and ELMO mediate cytoskeletal rearrangements during phagocytosis of apoptotic cells and cell motility. Elmo1 associates with DOCK 180 and may influence phagocytosis and effect cell shape changes. Src family kinase mediated tyrosine phosphorylation of ELMO1 influences signaling through Elmo1/Crk/DOCK 180 pathways. Elmo2 interacts directly with Rho G in a GTP-dependent manner and forms a ternary complex with DOCK 180 to induce activation of Rac 1. The RhoG-Elmo2-DOCK 180 pathway is required for activation of Rac 1 and cell spreading mediated by integrin, as well as for neurite outgrowth induced by nerve growth factor. Elmo3 acts in association with DOCK180 and Crk II and may be required in complex with DOCK180 to activate Rac/Rho small GTPases.		

— VALIDATION IMAGES —

Paraformaldehyde-fixed, paraffin embedded (Human pancreatic cancer); Antigen retrieval by boiling in sodium citrate buffer (pH6.0) for 15min; Block endogenous peroxidase by 3% hydrogen peroxide for 20 minutes; Blocking buffer (normal goat serum) at 37°C for 30min; Antibody incubation with (ELMO2) Polyclonal Antibody, Unconjugated (bs-20047R) at 1:400 overnight at 4°C, followed by operating according to SP Kit(Rabbit) (sp-0023) instructions and DAB staining.