

bs-20157R

[Primary Antibody]

HSV tag Rabbit pAb

BioSS
ANTIBODIES

www.bioss.com.cn

sales@bioss.com.cn

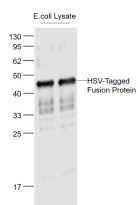
techsupport@bioss.com.cn

400-901-9800

— DATASHEET —

| | | |
|--|---------------------|--|
| Host: Rabbit | Isotype: IgG | Applications: WB (1:1000-5000) |
| Clonality: Polyclonal | | Reactivity: Species independent |
| Target: HSV tag | | |
| Purification: affinity purified by Protein A | | |
| Concentration: 1mg/ml | | Subcellular Location: Cell membrane |
| Storage: Preservative: 0.02% Proclin300, Constituents: 1% BSA, 0.01M PBS, pH7.4. Shipped at 4°C. Store at -20°C for one year. Avoid repeated freeze/thaw cycles. | | |
| Background: HSV tag is a peptide epitope tag, sequence: QPELAPEDPED. | | |

— VALIDATION IMAGES —



Sample: Lane1: HSV-Tagged Fusion Protein
Overexpression E.coli Lysate at 2ug Lane2: HSV-
Tagged Fusion Protein Overexpression E.coli
Lysate at 2ug Primary: Anti-HSV tag (bs-20157R)
at 1/1000 dilution Secondary: IRDye800CW Goat
Anti-Rabbit IgG at 1/20000 dilution Predicted
band size: 41 kD Observed band size: 45 kD