

bs-41425R**[Primary Antibody]****IL-4R Rabbit pAb****BioSS**
ANTIBODIES

www.bioss.com.cn

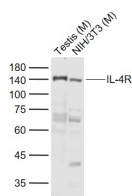
sales@bioss.com.cn

techsupport@bioss.com.cn

400-901-9800

— DATASHEET —

Host: Rabbit	Isotype: IgG	Applications: WB (1:500-2000)
Clonality: Polyclonal		Reactivity: Mouse (predicted: Rat)
GeneID: 16190	SWISS: P16382	
Target: IL-4R		
Immunogen: Recombinant mouse IL-4R : 26-233/810. < Extracellular >		Predicted MW.: 88 kDa
Purification: affinity purified by Protein A		Subcellular Location: Secreted ,Cell membrane
Concentration: 1mg/ml		
Storage: 0.01M TBS (pH7.4) with 1% BSA, 0.02% Proclin300 and 50% Glycerol. Shipped at 4°C. Store at -20°C for one year. Avoid repeated freeze/thaw cycles.		
Background: This gene encodes the alpha chain of the interleukin-4 receptor, a type I transmembrane protein that can bind interleukin4 and interleukin 13 to regulate IgE production. The encoded protein also can bind interleukin 4 to promote differentiation of Th2 cells. A soluble form of the encoded protein can be produced by an alternate splice variant or by proteolysis of the membrane-bound protein, and this soluble form can inhibit IL4-mediated cell proliferation and IL5 upregulation by T-cells. Allelic variations in this gene have been associated with atopy, a condition that can manifest itself as allergic rhinitis, sinusitis, asthma, or eczema. Two transcript variants encoding different isoforms, a membrane-bound and a soluble form, have been found for this gene. [provided by RefSeq, Jul 2008].		

— VALIDATION IMAGES —

Sample: Lane 1: Testis (Mouse) Lysate at 40 ug
 Lane 2: NIH/3T3 (Mouse) Cell Lysate at 30 ug
 Primary: Anti-IL-4R (bs-41425R) at 1/1000
 dilution Secondary: IRDye800CW Goat Anti-Rabbit IgG at 1/20000 dilution Predicted band size: 140 kD Observed band size: 140 kD